

# Religion and Motivated Cognition: When Ramadan Meets the College Entrance Exam

Ao Wang\*      Shaoda Wang†      Xiaoyang Ye‡

November 17, 2020 §

## Abstract

This paper reports a field experiment showing that motivated cognition causes people to fail to learn from important objective information. We find that when Chinese Muslim students were scheduled to take the high-stakes College Entrance Exam during the month of Ramadan, they exhibited strong patterns of motivated cognition to underappreciate the cost of fasting on exam performance. When randomly offered reading materials in which well-respected Muslim clerics explained that it would be permissible to break the fast during the exam, the students' motivated beliefs were significantly alleviated, which enabled them to more accurately interpret how fasting would affect exam performance, and made them more willing to consider breaking the fast during the exam.

**Keywords:** Motivated Cognition, Ramadan Fasting, College Entrance Exam

**JEL Codes:** D91, I21, Z12

---

\*UC Berkeley. Email: ao.wang@berkeley.edu.

†University of Chicago. Email: shaoda@uchicago.edu.

‡Brown University. Email: xiaoyang.ye@brown.edu.

§We thank Ned Augenblick, Roland Benabou, Aaron Bodoh-Creed, Ernesto Dal Bo, Alain de Janvry, Stefano DellaVigna, Fred Finan, Brian Jacob, Supreet Kaur, Jeremy Magruder, Aprajit Mahajan, Sakib Mahmood, Alex Rees-Jones, Elisabeth Sadoulet, David Yanagizawa-Drott, David Y. Yang, Noam Yuchtman, and numerous seminar and conference participants for helpful discussions. Xin Li provided excellent assistance with the field work. This research was made possible with support from the China Center for Education and Human Resources Research and generous funding from the National Natural Science Foundation of China (71613013). The research described in this article was approved by the University of Michigan IRB, protocol HUM00127559.

# 1 Introduction

Classical economic theories generally hold that people correctly update their beliefs in a Bayesian fashion. In reality, it is common and costly that many actually fail to learn from objective information on important issues. For examples, at the macro level, public opinions are polarized on topics such as global warming (Hart and Nisbet, 2012), GMO foods (Priest, 2000), and evolution (Plutzer and Berkman, 2008), despite overwhelmingly one-sided scientific evidence; at the micro level, individuals fail to process red flags of disease risks (Oster et al., 2013), and traders fail to internalize clear signals of housing-market crashes (Cheng et al., 2014).

To rationalize such learning failure, one of the behavioral economic theories is that people have motivated beliefs (Bénabou, 2015; Bénabou and Tirole, 2011, 2016): they attach psychological value to certain beliefs, and can distort their own perceptions toward such preferred beliefs to increase their utility.<sup>1</sup> However, to fully explain the “learning failure” observed in reality, existing empirical evidence on motivated beliefs still falls short on two important dimensions. First, while a series of lab experiments have been conducted to test for motivated beliefs,<sup>2</sup> experimental investigation in the field remains challenging due to the difficulty in exogenously varying people’s psychological motivation in a natural setting.<sup>3</sup> Second and most importantly, while existing work has shown that people tend to interpret subjective opinions in a biased manner, there is little evidence on the stronger form of motivated beliefs: whether/how people can distort purely objective evidence that is directly presented in front of their eyes. Such distortion of hardly disputable signals is referred to as “reality denial” by Bénabou and Tirole (2016), which is a key implication that distinguishes the theory of motivated beliefs from other theories explaining belief distortion.

To fill in these two gaps in the literature, in this paper, combining a large-scale high-stakes natural experiment with a novel field experiment, we provide the first empirical evidence on how people can distort important objective information in the field. In particular, we focus on a setting where religious practices conflict with secular activities, and reveal a specific type of information distortion among religious followers: the stringency of religious constraints substantially increases the costs of disobedience among religious followers, motivating them to self-rationalize their own religious behaviors to avoid regretting such decisions. This means

---

<sup>1</sup>This literature also closely relates to an older psychology literature on motivated reasoning, as summarized by Kunda (1990).

<sup>2</sup>Eil and Rao (2011) and Mobius et al. (2011) are among the first to show in the lab that belief updating are prone to motivation.

<sup>3</sup>Recent observational works have established that people are overly optimistic about their life expectancy Oster et al. (2013) and firm performance in the future Huffman et al. (2018), in a way that affects decision process and material outcomes.

they tend to distort signals about high costs of their religious behaviors.

Our empirical setting comes from a unique natural experiment in China. In this context, China’s College Entrance Exam (CEE), which is the predominant criterion for college admission and is perceived to be of extremely high stakes (Jia and Li, 2016), is held on June 7th and 8th every year. Between 2016 and 2018, the exam happened to fall in the month of Ramadan, which follows the Islamic (Lunar) Calendar, and shifts 11 days forward every year in the Gregorian Calendar. Using a Difference-in-Differences (DiD) estimator with administrative data on all students in high school graduation cohorts between 2011 and 2016, we find that taking the exam during Ramadan has a quantitatively important negative impact on the exam performance of Muslim students, as compared to their non-Muslim counterparts.

Given the large negative impacts of fasting on high-stakes exam performance, and the rigidity of the CEE schedule, Muslim students who were about to take the CEE during Ramadan in 2018 faced a tough dilemma between the observance of Ramadan fasting and potentially better exam performance. However, for those who are practicing Muslims, whether or not they could delay the fast until after the exam depended on obtaining an exemption from a trusted expert in Islamic jurisprudence (Faqih), explicitly allowing them to break the fast for the CEE. Seeing that there was no clear exemption from fasting made public for the CEE in our setting, we interviewed two well-respected Muslim clerics, who, based on their Quranic reasoning, argued that it would be permissible to skip fasting in the name of the CEE. Our presumption is that, reading this interview summary would give Muslim exam-takers more flexibility in choosing whether or not to fast during the 2018 CEE.

Leveraging this unique empirical setting, we conducted a randomized controlled experiment in a large Muslim high school in the Ningxia Hui Autonomous Region, a Chinese province where 38% of the population is ethnically Hui (Muslim). By randomly showing a written summary of “pro-exemption” interview to half of the Muslim students who were about to take the CEE (during Ramadan) in 2018, we created experimental variation in the stringency of religious practices: some students believed that they were required to fast during the exam, while other students were persuaded by Muslim clerics that the fast could be delayed for the exam. We then showed all students the same graph (Figure 1), which displays what we found in the administrative data: the CEE score gap between Muslim and non-Muslim students remained stable in years when the exam did not occur during the Ramadan (2011-2015), and enlarged substantially (in the direction unfavorable to Muslim students) when the exam did occur during the Ramadan (2016).

Upon viewing Figure 1, all students were asked to read from this graph, in an incentivized manner, “how large was the CEE score gap between Muslim and non-Muslim students in 2016, when Muslim students took the CEE during Ramadan.” We find that students who

did not read the “pro-exemption” article (control group) show strong patterns of motivated cognition: when reading the graph, they systematically underestimate the CEE score gap between Muslim and non-Muslim students in 2016, despite the fact that this information is purely objective and clearly presented in front of their eyes. In contrast, when asked to estimate the same gap from the same graph, Muslim students who read the “pro-exemption” article (treatment group) are 40% more accurate. These results are consistent with students distorting objective information, when having a psychological incentive to do so – in this case, dealing with the conflicting pull factors of the religious requirements and the CEE stakes.<sup>4</sup>

We conduct a series of additional analyses to better understand the underlying mechanisms. First, we find that the baseline results are mainly driven by extensive margin effects: Muslim students either became particularly accurate in information acquisition after receiving the exemption, or did not adjust their beliefs at all. This could potentially be explained by the fact that the incentives to manipulate beliefs arise from one’s fasting behavior during the CEE, which is itself a binary decision. Second, we show that the bias in information cognition is most salient among students who always strictly followed the Ramadan fasting requirements during high school, and they are also the ones who respond strongly to our provision of exemptions. This suggests that the baseline findings are indeed driven by motivations associated with fasting attitudes. Third, we conduct a placebo test, and find that the provision of an exemption to delay the fast does not affect the acquisition of information that is unrelated to the Ramadan fasting. Fourth, using a “list experiment” approach, we provide suggestive evidence that alleviating motivated cognition makes students better informed about the costs of Ramadan, and thus more willing to delay the fast until after the CEE.<sup>5</sup>

Our paper mainly relates to two strands of literature. First and foremost, this paper provides a direct and strong test for motivated beliefs in a field setting with high-stakes information (Bénabou, 2015; Bénabou and Tirole, 2011, 2016). Originating from research on motivated reasoning in psychology,<sup>6</sup> the existence and implications of motivated beliefs/cognition have attracted much scholarly interest in both experimental economics and political science<sup>7</sup>. Our paper shows that motivation can affect learning at the very begin-

---

<sup>4</sup>It is worth noting that, after the survey, all students were provided access to the “pro-exemption” article. This means that beyond the survey, which took place a month before the CEE, our intervention should not create any subsequent difference in CEE performance between the treatment and control groups. This is later confirmed by the eventual CEE score in 2018, which shows no correlation with our intervention.

<sup>5</sup>A list experiment requires respondents to provide the total number of items on a list to which they answer affirmatively, rather than to answer each item separately, alleviating the bias in eliciting answers to sensitive questions.

<sup>6</sup>See Kunda (1990) for an extensive discussion of the psychology literature.

<sup>7</sup>Redlawsk (2002), Taber and Lodge (2006), Nyhan and Reifler (2010) are among the most notable studies

ning of decision making, before information storage (Chew et al., 2019; Zimmermann, 2020) and the potentially complex process of (non-)Bayesian updating (Eil and Rao, 2011; Möbius et al., 2011)).<sup>8</sup> Most strikingly, we find that such distortion does not even rely on the cognitive cost of information acquisition (Ambuehl, 2017): subjects in our experiment are actively distorting a simple objective signal directly presented in front of their eyes, before even starting to interpret it. Such behavior of “reality denial” is a distinct prediction of motivated beliefs Bénabou and Tirole (2016), but has not yet been examined in the existing empirical literature. Moreover, as a field experiment,<sup>9</sup> our study provides the first evidence that motivated beliefs extend to realistic settings where high-stakes decisions are involved.

Second, our paper contributes to the literature on religious participation by documenting how religious followers tend to under-appreciate the costs of their religious activities, and also shedding light on the behavioral-economic mechanisms underlying such mis-perceptions. The existing economics literature on religious participation mainly follows a “rational choice” framework to understand religious behaviors,<sup>10</sup> which relies critically on the condition that individuals can accurately evaluate the costs and benefits of religious activities. However, rich evidence suggests that this assumption is unlikely to hold in reality: for instance, despite mounting evidence documenting the (secular) costs of Ramadan fasting (Almond and Mazumder, 2011; Oosterbeek and van der Klaauw, 2013; Schofield, 2014; Almond et al., 2015; Majid, 2015), anecdotal observations still suggest that practicing Muslims under-appreciate such costs (Kuran, 2018). Our paper formally investigates the under-appreciation of religious costs, and examine its underlying mechanisms.<sup>11</sup> Since our DiD analysis accurately quantifies the costs of religious participation (taking the exam during Ramadan), we have the unique opportunity to identify the difference between “perceived cost” and “actual cost” of religious participation, and to analyze the driving force of such a discrepancy. Our results suggest that stringent religious practices define the action of the followers, motivating them to self-rationalize such action by underestimating its potential costs. These findings imply

---

that consider motivated reasoning in the context of political science.

<sup>8</sup>This complements existing studies that investigate the role of motivation in beliefs or decision making (Dana et al., 2007; Di Tella et al., 2015; Exley, 2016; Exley and Kessler, 2018).

<sup>9</sup>More precisely, according to the classification of field experiments in Harrison and List (2004), our experiment can be defined as a “framed field experiment” in that the subjects of interest (i.e., students who will face the choice regarding fasting on exam day) constitute precisely the population with whom we are conducting the experiment. Moreover, the intervention we introduce is of critical relevance to their important decision in real life.

<sup>10</sup>For example, Azzi and Ehrenberg (1975); Iannaccone (1992, 1998); Montgomery (1996); Stark and Finke (2000); Berman (2000).

<sup>11</sup>On the benefit side of the equation, Augenblick et al. (2016) find that religious followers sincerely attach high pecuniary values to their religious beliefs, Campante and Yanagizawa-Drott (2015) find that Ramadan fasting increases happiness. Our paper complements these papers by investigating the cost side of the equation.

that religious followers do not realize the full costs of their religious behaviors, which could help rationalize prevalent religious participation and rapid religious expansion in the rational choice framework.

The remainder of this paper is organized as follows: in Section 2, we introduce some background information and present the DiD results on the negative consequences of Ramadan; in Section 3, we discuss the details of our experimental design and implementation, and lay out the testable hypotheses which guide the empirical analysis; in Section 5, we present the empirical results and discuss underlying mechanisms; in Section 6, we conclude.

## 2 Background

In this paper, for both the analysis of administrative data and the survey experiment, we focus on the Ningxia Hui Autonomous Region (henceforth Ningxia), which is a provincial unit in the northwest of China, which has a population of 6.3 million, and a GDP per capita of \$7103.

Among the 6.3 million residents in Ningxia, 38% are Hui, a Muslim minority ethnic group in China, and the rest are mainly Han, the majority ethnic group in China (non-Muslim).<sup>12</sup> In general, the Hui people are relatively assimilated into the mainstream Chinese society, for example, the Hui people’s mother tongue is Mandarin, and most of the young Hui people wear the same clothes as their Han peers.

Due to the large presence of Hui people, Islam is the dominant religion in Ningxia. There are currently more than 3300 major mosques and more than 4000 certified Imams in Ningxia. In comparison, there are fewer than 200 religious sites for all the other religions combined, including churches, Buddhist temples, Taoist temples, etc.

In the remainder of this section, we introduce the background of our empirical setting: the College Entrance Exam in China, the Muslim Ramadan fasting, and how the overlap between Ramadan and the exam affected the performance of Muslim students.

### 2.1 The College Entrance Exam in China

The College Entrance Exam (CEE) in China is a closed-book written exam held on June 7th and 8th every year. Students take the exam in their province of residence, within which the exam content is the same for students in the same track (humanities or STEM). All students are tested on Chinese, mathematics, and English, each with a maximum score of 150 regardless of their track. In addition, students in the humanities track take another

---

<sup>12</sup>There are about 10 million Hui Muslims in China, and roughly one-fourth reside in Ningxia.

exam on history, politics, and geography, while students in the STEM track take another exam on physics, chemistry, and biology. This track-specific exam accounts for 300 points. The total score of the CEE is therefore 750 points.

All Chinese colleges admit students based on their provincial rankings of the CEE score. For the vast majority of students, conditional on their own stated college preferences, provincial ranking of the CEE score is the sole criterion that determines the admissions outcome.<sup>13</sup> Given the tremendous value placed on education in the east Asian culture and the huge return to elite college education (Jia and Li, 2016), it is not surprising that the CEE is considered by nearly all parents and students as a life-changing opportunity, and regarded by many as the most high-stakes event in a lifetime.

College Admission in China follows a centralized system, where each student first learns about his own score, then submits a ranked list of preferred colleges, and then the colleges admit students solely based on the submitted lists and exam scores. Due to the highly competitive nature of this matching market, even a modest improvement in CEE score (say 5 points out of 750, approximately 0.05 standard deviation) would typically allow a student to include better colleges in his ranked list, and could easily lead to more desirable admission outcomes. Even within the same college, popular majors such as economics, finance, and computer science are typically only available to the students with higher CEE scores. Therefore, students at any part of the score distribution generally have strong incentives to increase their CEE scores, even by just a small margin.

## 2.2 The Muslim Ramadan Fasting

Ramadan is the 9th month in the Islamic Calendar, and is observed by Muslims around the world as the holy month of fasting (Sawm) to commemorate the first revelation of the Quran to Muhammad according to Islamic beliefs. Fasting during Ramadan is regarded as one of the “five pillars (fundamental religious duties) of Islam.” It requires abstinence from food and liquids (including water) from dawn to sunset, and is obligatory for practicing Muslims. Exemptions to break the fast are typically made for children, the ill, the elderly, travelers, and breastfeeding women.

Many of the conflicts that arise between secular activities and religious practices are not explicitly discussed in the Quran. Under these conditions, practicing Muslims typically rely on a local expert in Islamic jurisprudence (Faqih) to decide whether their cases could be granted an exemption. For instance, the Egyptian national soccer team qualified for the FIFA World Cup in 2018, for the first time in 28 years, but the game was scheduled

---

<sup>13</sup>Rare exceptions include winners of international Olympiad contests, students who win sports scholarships, students with exceptional art talents, etc.



to start right after the end of the month of Ramadan. Seeing this potential conflict, the Grand Mufti of Egypt, Shawki Allam, granted the Egyptian national squad his permission to postpone their Ramadan fasting obligations in the days building up to the World Cup. On the contrary, the Tunisian national team faced the same problem, but did not get such an exemption, and as a result, the players kept fasting throughout the month of Ramadan while training to prepare for the World Cup.

Observing Ramadan has the potential to offer individuals certain benefits, such as feeling closer to God, and learning to exercise greater self-control. However, it has also been well-documented by an extensive medical literature that Ramadan fasting negatively affects health, through weight loss, metabolic changes, irritability, headaches, dehydration, sleep deprivation, lassitude, etc. (Hallak and Nomani, 1988; Ziaee et al., 2006; Leiper and Molla, 2003; Lancet, 2009). Not surprisingly, these symptoms caused by Ramadan fasting have been shown to be associated with a feeling of tiredness, loss of concentration, and unwillingness to work (Affi, 1997; Karaagaoglu and Yucecan, 2000). In the economics literature, Campante and Yanagizawa-Drott (2015) show that Ramadan fasting reduces economic output, Schofield (2014) documents that agricultural productivity drops during Ramadan, and Oosterbeek and van der Klaauw (2013) show that students have lower test scores due to Ramadan fasting. Relatedly, outside of the Ramadan context, Figlio and Winicki (2005) show that schools subject to accountability pressure strategically raise the calorie content of meals on test days in an apparent attempt to boost the students' short-term cognitive performance.

Due to the difference between the Islamic (lunar) calendar and the commonly used Gregorian calendar, Ramadan shifts 11 days forward every year and has a 33-year cycle. The detailed fasting schedule changes every year and is different across regions based on each location's latitude, which is publicized locally by the Imams before the start of the month of Ramadan. In some extreme cases, fasting hours could be almost all day long, leaving little time for caloric and water intake.

### **2.3 Ramadan and Exams**

Between 2016 and 2018, the month of Ramadan mainly fell in May and June, which are popular times for final exams and high school and college entrance exams around the world. As a result, millions of Muslim students worldwide faced a dilemma between practicing the Ramadan fasting and excelling in academic exams. For example, as described in an information paper by the Association of School and College Leaders, 2016 was the first time Ramadan had clashed with major exams and tests in the UK since the 1980s, and this



overlap will likely continue until 2019/20.<sup>14</sup>

Around the world, school leaders and teachers are making efforts to accommodate and support students during Ramadan, including schools in the United States,<sup>15</sup> the United Kingdom,<sup>16</sup> Germany,<sup>17</sup> France,<sup>18</sup> Canada,<sup>19</sup> and the United Arab Emirates,<sup>20</sup> etc. The popular strategies to help students who fast include rescheduling testing or event times, shortening school days, providing extra and comfortable space, and other accommodations. At the same time, some institutions, such as the Association of School and College Leaders, collected and distributed statements from established Muslim leaders, suggesting that students could delay the fast until after the exam, which is similar in spirit to the “pro-exemption reading materials” offered in our treatment group.<sup>21</sup>

The problem is particularly serious when students are scheduled to take high-stakes exams and it is not possible to reschedule the exams. For example, [Oosterbeek and van der Klaauw \(2013\)](#) study the effect of Ramadan on final grades of Muslim students in an introductory microeconomics course in the Netherlands, where teaching and exam dates are not adjusted for the fasting period. Using data over five years and a Difference-in-Differences strategy, they find that each additional week of Ramadan fasting reduces the final grades of Muslim students by about 0.1 standard deviations.

Muslim students in China faced even more serious situations. Between 2016 and 2018, the College Entrance Exam in China, which is fixed on June 7th and 8th, fell in the month of Ramadan. When deciding how they observe Ramadan, students need to take into consideration: (1) the great importance of the CEE for their future, (2) the negative impact of fasting on CEE performance, and (3) any flexibility to delay the fast until after the CEE. While there is little doubt that most CEE-takers are well aware of the importance of this exam, neither (2) nor (3) are fully clear in the Chinese context: no empirical evidence has been provided regarding the cost of Ramadan on CEE performance, and very little information regarding “whether fast could be delayed until after the exam” could be found on the Chinese internet or other media.<sup>22</sup>

---

<sup>14</sup>“Ramadan: Exams and Tests, 2018”, visited on Aug 5, 2018

<sup>15</sup>K-12 school example from The Seattle Times; higher education example from USA Today College.

<sup>16</sup>An Op Ed piece at School Week: “How schools can support students during Ramadan?”

<sup>17</sup>An article at World Crunch: “Hungry Students? Postponed Exams? Ramadan in German Schools”

<sup>18</sup>A news report at RT International: “Row over postponing French Muslim students’ exams for religious holiday”

<sup>19</sup>A CBC news report: “How are schools accommodating fasting students during Ramadan?”

<sup>20</sup>News report at Gulf News - Education: “Five-hour school days in Dubai during Ramadan”

<sup>21</sup>This intervention from the UK ASCL suggests that, while exemptions are potentially available, many Muslim students in the UK are likely unaware of this possibility. This is consistent with our anecdotal observation in China, which motivated our experimental design.

<sup>22</sup>Two pieces of relevant information could be found through online search engines: one article written by an Imam arguing that students should keep fasting during the CEE, and another a translated piece based

In the following subsection, we first estimate how Ramadan affects exam performance in the absence of any intervention or accommodations, quantifying consideration number (2); in the experimental design to be discussed in Section 3, we describe how we collected pro-exemption opinions (and Quranic reasoning) from well-respected Muslim clerics and randomly distributed among Muslim students, creating experimental variation in consideration number (3).

## 2.4 The Costs of Taking the CEE During Ramadan

To identify the causal impact of taking the CEE during Ramadan on students’ academic performance, we obtained administrative data on the exam performance of every urban student in Ningxia who took the CEE between 2011 and 2016. This information is maintained by the Ningxia Educational Examination Institute, and was the criterion used in the college admissions process. This administrative dataset contains the exam score of every urban CEE-taker in Ningxia during the six-year period, as well as their basic background information, such as ethnicity, gender, age, school, county of origin, etc.<sup>23</sup>

Exploiting the fact that the CEE fell in the month of Ramadan only in 2016, and the fact that Ramadan is expected to affect the performance of Muslim students only, we identify the causal impact of taking the exam during Ramadan by measuring how the Hui-Han gap in exam score changed in 2016, compared with the gaps between 2011 and 2015. As shown in Figure 1, the Hui-Han gap in exam score was overall stable between 2011 and 2015: on average Hui students score 15 points lower than their Han counterparts.<sup>24</sup> However, the Hui-Han gap almost doubled in 2016, suggesting that taking the exam during Ramadan had salient negative impacts on the relative performance of Muslim students.

To formalize the graphical patterns, we estimate a simple Difference-in-Differences model:

$$Score_{isct} = \sum_{t \in \{2012-2016\}} \alpha_t \cdot Hui_i \cdot Year_t + \lambda_{st} + \epsilon_{isct} \quad (1)$$

where  $Score_{isct}$  is defined as the CEE score of student  $i$ , who chooses track  $s$  (STEM vs. Social Sciences), from county  $c$ , and takes the exam in year  $t$ .  $Hui_i$  is a dummy variable that equals 1 if student  $i$  is ethnically Hui, and 0 otherwise.  $Year_t$  is the Year Fixed Effect,  $\lambda_{st}$

---

on the statement of the Egyptian Grand Mufti, suggesting students could delay their fast under certain circumstances.

<sup>23</sup>Since we only have data for urban CEE-takers to conduct the DiD analysis, for consistency, the field experiment is also carried out in an urban Muslim high school.

<sup>24</sup>The enlarged gap in 2014 was driven by the fact that more Hui students chose the humanities track rather than the STEM track, and the humanities track exam was relatively difficult in 2014. This fluctuation disappears once we control for a Track-by-Year Fixed Effect in the regression analysis.

is the Track-by-Year Fixed Effect, and  $\epsilon_{isct}$  is the error term. Standard errors are clustered at the school level to allow for serial correlation within the same high school.

Since the CEE fell in the month of Ramadan only in 2016, we expect the Hui-Han gap in exam scores to be stable between 2011 and 2015. Therefore, for  $t \in \{2012 - 2015\}$ ,  $\alpha_t$  should be statistically indistinguishable from zero. Because the Hui students took the exam during Ramadan in 2016, we expect to see a drop in their relative performance, and therefore a negative and significant  $\alpha_{2016}$ .

As can be seen in Figure 2, the regression results are highly consistent with our expectations:  $\alpha_t$  is always a precisely estimated zero between 2012 and 2015, prior to the overlap between the CEE and the month of Ramadan, which suggests that the Hui and Han students have parallel trends in exam performance before 2016. In 2016, when Hui students took the exam during Ramadan, their performance dropped significantly relative to their Han peers, by a magnitude of more than 13 points, out of the average score of 383. In contrast with Figure 1, the pre-trend is flatter since we have controlled for the idiosyncratic fluctuations at the track-year level. The regression results are quantified in Table 1, where we also show that the results are robust to the inclusion of gender and county fixed effects, and also robust to collapsing all the pre-treatment data into one control group.

In this context, a score loss of 13 points is a huge burden for the students, and would very likely lead to admission by a lower-ranked college, or at least a “less desirable” major within the same college.<sup>25</sup> It is also worth pointing out that our DiD model estimates an “Intention to Treat (ITT)” effect, rather than a “Treatment on the Treated (TOT)” effect, given the fact that not all Hui students are practicing Muslims, and some of them might not fast during the exam. Therefore, the real impact of fasting during the exam would be even larger than 13 points.<sup>26</sup>

### 3 Experimental Design and Implementation

For Muslim students who were about to take the exam during Ramadan in 2018, the huge negative impact of Ramadan on CEE scores in 2016 (as documented in Section 2) would likely be perceived as undesirable information. However, correctly understanding this information could potentially be beneficial to them, for at least three reasons. First, knowing the cost

---

<sup>25</sup>To put the magnitude in context, in Ningxia, winning in the highly prestigious National Mathematics Olympiad Competition or an international athletics competition would only be rewarded with 5 bonus CEE points.

<sup>26</sup>As shown in Table 3, in our experimental sample, around 54% of high school students never broke a fast. If the sample is representative of Ningxia, this would suggest that the TOT effects could be as large as 24 points (0.24 standard deviations).

of Ramadan fasting for exam performance would help them make better decisions about whether or not to delay the fast until after the CEE. Second, knowing this information in advance could help them decide the optimal efforts to put into studying for the CEE. Third, this information could help them predict their own exam performance, which could help them make better college choices.<sup>27</sup>

However, if we simply presented our DiD findings to those Muslim students who were about to take the CEE during Ramadan in 2018, the stringent requirements of Ramadan fasting in the Islamic religion could give them psychological motives to discount this undesirable information, and underestimate the cost of Ramadan on exam performance. Motivated by this intuition, we designed and implemented a field experiment in Ningxia in May 2018, which formally tests how the stringency of religious practice (Ramadan fasting requirement) generates motivated cognition regarding the cost of religious behavior (impact of Ramadan on exam performance).

With the assistance of the China Center for Education and Human Resources Research at Peking University, we partnered with a large urban Muslim high school in Ningxia to conduct a survey experiment. The high school is the second largest in its prefecture city, with 24 classes in its senior cohort (about to take the CEE in June 2018). The majority of students are Hui Muslim, and the average CEE score in the school is comparable to the provincial average. More than 80% of the students board at school on the weekdays, making a student’s religious behaviors such as fasting and praying generally observable to other students.

Our survey experiment took place on May 4th, 2018 (about one month before the CEE in 2018), during a 40-minute afternoon class on Friday, simultaneously for the entire senior cohort. The 533 Hui students who were present to participate constitute our population for this study. The students were informed by their head teachers before the study that this was a survey conducted by Peking University, which is our partner institution and the top university in China. Students were also informed that completing the questionnaire could lead to as much as a 20 Yuan cash reward.<sup>28</sup> Given the reputation of Peking University among high school students in China, the questionnaires were answered carefully by the vast majority of our subjects, as can be reflected by the fact that most students correctly answered our multiple choice questions based on a 1000-word reading material.

---

<sup>27</sup>While the college choices are only made after the announcement of the CEE scores, students need to learn about potentially relevant colleges in advance, based on their expected CEE score. It has been shown that finding a “suitable” shortlist of schools is central to realizing a satisfactory admissions outcome (Wang et al., 2020).

<sup>28</sup>Students on average spend about 10 Yuan on meals every day. 20 Yuan is thus a substantial payment to a high school student.

As summarized in Table 2, our survey experiment has a 2-by-2 design. Randomly, half of the students read material containing the exemption to delay the fast for the CEE (*Exemption*); the other half read an article on art and philosophy (*No Exemption*). In the meantime, we cross-randomized the information received by students: half of the students were incentivized to read a graph about the Hui-Han CEE score gap (*Information*), while the other half were incentivized to read a graph about the Sino-Japanese income gap (*No Information*). The 533 Muslim students participating in the study were randomized into one of these four arms, which they were unaware of during the survey experiment. A flow chart summarizing the survey experiment, translated versions of all survey questions, and translated versions of the treatment and control reading materials can be found in Appendix B.

In our treatment reading material, we summarized statements from well-respected Chinese Muslim leaders, which directly gave exemptions to students to delay the fast until after the CEE, and combined them as an article of about 1000 Chinese words. Specifically, we interviewed an established Muslim scholar, the Imam of an historic mosque, who explicitly said that “Muslim students should delay their fast until after the CEE is finished.” We also interviewed a famous religious leader, who is the vice president of the provincial Islamic Association, and was told that “we should interpret the Quran in the modern context and allow the CEE participants to delay their fast.” The two Imams also gave the Quranic reasoning behind their arguments. We also collected similar exemptions given in Egypt and France to further support the case. For the control reading material, we edited an article from a famous Chinese writer, Xiaobo Wang, which is about different perspectives in appreciating art, and has roughly the same length as the religious reading. For both treatment and control readings, to ensure that students understood the materials correctly, we asked three multiple choice reading comprehension questions after the main texts, and students got monetary rewards if they answered these questions correctly.

Our main outcome of interest is whether a student could accurately acquire the information regarding the costs of taking the CEE during Ramadan. To measure such cognitive accuracy, we presented half the students (randomly selected) in each group (treatment and control) with Figure 1, which documented how the Hui-Han gap in CEE score was stable between 2011 and 2015, but enlarged abruptly in 2016. The scale of Figure 1 was intentionally labeled in a coarse way, where we only showed the max (0) and min (-40) values, but omitted all the intermediate scales, so that the students had to read carefully to accurately estimate the enlarged Hui-Han gap in 2016.

We explicitly told the students that “*between 2011 and 2015, the CEE did not overlap with Ramadan, and the Hui-Han CEE gap was relatively stable (-14.7 in 2011, and -16.6 in 2015); however, in 2016, the CEE fell in the month of Ramadan, and the Hui-Han CEE*

*gap enlarged in this year. Please read the Hui-Han gap in 2016 from the graph.*” In order to incentivize careful reading of the gap, we offered cash rewards to students whose estimates were in the top 50% in terms of accuracy. The main hypothesis is that if students think they need to fast during the CEE, they would be motivated to underestimate the cost of fasting, therefore students would tend to have downward biases when reading the gap from the graph. On the contrary, when aware of the exemption, students would think that they do not have to fast during the CEE, and would thus be able to absorb the information with less influence from psychological motivations, and therefore get more precise estimates from the same graph.

Both our anecdotal knowledge and the recent literature suggest that Muslim students might not be fully aware of the negative impacts of fasting (Kuran, 2018). To verify whether this is true in our context, for the other half of the students in each group, we did not show them the “Hui-Han CEE gap” graph (Figure 1). Instead, we just told them “*between 2011 and 2015, the CEE did not fall in the month of Ramadan, and the average Hui-Han CEE gap was -16.4; however, in 2016, the CEE fell in the month of Ramadan,*” and then we asked the students to guess the 2016 Hui-Han CEE gap, in an incentivized way.<sup>29</sup> By doing so, we could elicit students’ priors regarding the Hui-Han CEE gap, in the absence of any intervention.

For the students who did not read the “Hui-Han CEE gap” graph, we conducted a placebo test, where we asked them to read a graph on the Sino-Japanese income gap, as illustrated in Figure 3. Since exemptions to delay the fast should not affect motivations to distort beliefs about the Sino-Japanese income gap, we expect no difference in reading the gap in this graph.

For students in all four arms, in addition to the randomized contents (religious vs. placebo reading; Hui-Han vs. Sino-Japanese graph), we also asked them a common set of questions on basic individual characteristics, including age, gender, parental education, access to computer, access to internet, academic track, whether boarding at school, whether the student prays daily, whether the student ever broke a fast during high school, etc. We compared the answers to the administrative information maintained by the school to ensure the authenticity of the data.

At the end of the questionnaire, after the students completed all the common questions, the reading materials, and score gap estimation specific to their assigned arm, we also conducted a common “List Experiment” for every student, where we provided five statements

---

<sup>29</sup>If the accuracy of one’s guess was above the median student, he received a cash reward of 3 RMB. We adopted this simple payment scheme (acknowledging its potential shortcomings) instead of more rigorous ones such as Hossain and Okui (2013), because in our pilot studies the latter schemes appeared too complicated for subjects in our setting and caused substantial confusion.



about the CEE, four of which were subjective and unrelated to religion, including “(1) *learning alone is more effective than learning in groups*, (2) *we should care about what we have actually learned more than the CEE score itself*, (3) *playing sports is good for exam preparation*, (4) *the CEE mainly tests on familiarity with the material rather than actual intelligence*,” and one statement was about Ramadan fasting, “(5) *delaying the fast until after the CEE is acceptable*.” We asked each student how many of the five statements they agree with, without having to specify which statements in particular. By comparing the number of statements agreed with in each arm, we could estimate the impacts on fasting attitudes, both the direct effect of relaxing the religious constraint, and the indirect effect of better learning about the cost of fasting on exam performance.

Given the 2-by-2 design, we prepared four different types of questionnaires: *No Exemption\*No Information*, *Exemption\*No Information*, *No Exemption\*Information*, *Exemption\*Information*. All questionnaires have an identical cover letter explaining that this is a survey conducted by Peking University, and the data is confidential and will be used for purely academic purposes. We pre-randomized the order of the questionnaires before distributing them in each classroom; as a result, the 533 Muslim students were randomly assigned one of the four types of questionnaires. We hired 24 surveyors, each covering one classroom throughout the survey experiment, to make sure that students answered their questionnaires individually, and did not communicate with each other throughout the process. Given that the cover letters were identical and the students did not communicate during the survey, it is most likely that the vast majority of students did not realize that they were assigned differentiated questionnaires until the end of the survey experiment.

To check the quality of randomization, in Table 3, we present results from the ANOVA test across the four different arms, for all the baseline characteristics that we collected. As can be seen, the four arms are overall very well balanced with each other, suggesting that the randomization is well-executed. There exists only one case where the ANOVA test is marginally significant (perceived value of college). As will be shown in the tables forthcoming, none of our main results would be affected in any substantial way if we included all these covariates in the regressions.

In addition to checking for balance, Table 3 also provides some useful information about our context: less than 5% of students have a parent who graduated from college, consistent with the fact that Ningxia is one of the least developed provinces in China; 85% of the students board at school, which means that whether or not a student keeps fasting is largely observable to his peers; 59% of the students pray every day; and 54% of the students never broke a fast throughout high school, suggesting that there exists substantial variation in the religiosity of students.



## 4 Testable Hypotheses

To rationalize the experimental design and guide the empirical analysis, we propose a simple conceptual framework based on the theory of motivated beliefs. In this model, a subject jointly chooses two parameters: (1) his belief about the average cost of Ramadan on CEE performance; and (2) whether or not to break the fast during the CEE. By doing so, he maximizes his own utility, which consists of three components: (a) anticipatory utility of exam results; (b) benefits from sticking to the religious practice; and (c) the cognitive cost of manipulating his own beliefs.

The details of the model, including its setup, mathematical proofs, and formal propositions, are elaborated in Appendix A. In this section, we simply lay out in words the main testable hypotheses derived from the model, and briefly explain the associated intuitions.

**Hypothesis 1** *When reading the 2016 Hui-Han CEE score gap from Figure 1, in the absence of the exemption to delay the fast until after the CEE, Muslim students would underestimate the true gap.*

This hypothesis is the core implication of motivated cognition: students who stick to fasting due to religious constraints are motivated to underestimate the cost of fasting. The intuition in our conceptual framework is clear: students face a trade-off between the bad anticipatory utility on exam results due to fasting and the cognitive cost of suppressing the truth in order to be overly optimistic.

**Hypothesis 2** *When reading the 2016 Hui-Han CEE score gap from Figure 1, students who received the exemption to delay the fast would on average get more precise estimates, as compared to those who did not get the exemption.*

This is the main test of our paper. Receiving the exemption relaxes the religious constraint, which should alleviate the motivation to underestimate the cost of Ramadan on exam performance, and lead to more accurate reading of Figure 1. Note that this is a particularly strong test, as Muslim students were presented with the exact same objective information right in front of their eyes, and they were asked to read the “objective information itself,” rather than “how they update their own priors based on such information.” Therefore, any difference in graph-reading caused by the exemption should be interpreted as the magnitude of “objective information manipulation,” which was motivated by the stringency of religious constraints.

**Hypothesis 3** *When given the exemption, students adjust at the extensive margin. Either they do not debias at all (non-compliers), or they read the Hui-Han CEE gap highly accurately (compliers).*

Muslim students are jointly choosing “whether to fast during the CEE” and “the belief to hold on the cost of Ramadan.” Since the fasting decision is binary, our model implies that the choice on belief manipulation would also be polarized. This means that in this model adjustment in accuracy happens only at the extensive margin: when receiving the exemption, some students do not comply, and remain highly biased in graph-reading; other students comply, and become highly accurate in graph reading. Admittedly this is a bit surprising from an ex ante point of view. We discuss the relative contribution of extensive and intensive adjustment in our empirical section.

**Hypothesis 4** *On average, students who kept fasting in the past would exhibit more severe bias when reading the 2016 Hui-Han CEE score gap from Figure 1, but they would also respond more strongly to the exemption and reduce their bias more.*

It is important to point out that we abstract from the potentially differential treatment effects across students with different fasting history. In our model, the value of fasting decreases to 0 if an exemption is granted, regardless of the level of original utility from adherence to religious practice. Under this premise, for students who never broke a fast throughout high school, the religious constraint is likely to be more stringent, which means they would have stronger motivation to underestimate the cost of Ramadan on CEE performance, in order to gain psychological relief. Therefore, students who always fasted should have stronger baseline bias in reading the Hui-Han CEE graph. Meanwhile, these “always-fasting students” also had more binding religious constraints, which means that the exemption to delay the fast for the CEE would have a stronger debiasing effect on them, rather than on those students who did not always fast.

**Hypothesis 5** *Students with higher valuation for college education would exhibit more severe bias when reading the 2016 Hui-Han CEE score gap from Figure 1, but they would also respond more strongly to the exemption and reduce their bias more<sup>30</sup>.*

This follows a similar logic to Hypothesis 4. When students value college education more, the higher stakes give them more motivation to underestimate the cost of Ramadan on CEE performance, to gain psychological relief. But in the presence of an exemption, since the information on the “cost of fasting” is more valuable to them,<sup>31</sup> they would respond to the exemptions more strongly and debias more.

---

<sup>30</sup>In our model, consistent with the stringency of religious practice, the value of Ramadan practice without exemption is assumed to be much larger than the cost of fasting.

<sup>31</sup>The information could help them maximize their performance in the CEE, which they value highly.

**Hypothesis 6** *When reading the Sino-Japanese income gap from Figure 3, whether or not a student received the exemption would not affect the accuracy of the estimate.*

This is the main placebo test of our paper. Since the Sino-Japanese income gap is unrelated to either Ramadan or the CEE, any motivated beliefs associated with reading Figure 3 would not be alleviated by the exemptions.

**Hypothesis 7** *Both the exemption and the information could help Muslim students adopt a more flexible schedule in Ramadan fasting. Importantly, these two interventions are complementary: providing exemption and information at the same time could most effectively persuade Muslim students to delay the fast until after the CEE.*

This hypothesis links our interventions to students’ willingness to delay their fasts. Exemptions mechanically make students more willing to delay the fast, as they are told to be allowed to do so. Information on the Hui-Han CEE gap (Figure 1) could also make students more willing to delay the fast, as they become more aware of the potential costs. Our model predicts that these two interventions are complementary to each other: receiving the exemption relaxes the religious constraint, which alleviates motivated cognition, helping the students better absorb the undesirable information on the negative impact of taking the CEE during Ramadan. Therefore, when we combine the exemption with information in one intervention, it should have the strongest effect in terms of persuading students to delay their fasts.

## 5 Results

In this Section, we analyze the experimental data, and test each of the hypotheses discussed in Section 4 respectively.

### 5.1 Students’ Priors on the Cost of Ramadan

We first elicit students’ priors on the impacts of taking the CEE during the month of Ramadan. In our 2-by-2 experimental design, there exists an arm where Muslim students receive neither the religious reading (exemption) nor the Hui-Han CEE gap information, which we refer to as “*No Exemption\*No Information.*” Within this group, students do not get any experimental intervention, so they should maintain their original priors regarding the cost of taking the CEE during Ramadan. Therefore, incentivizing them to guess the enlarged 2016 Hui-Han CEE score gap would elicit their priors on the cost of the Ramadan fast, which is representative for our population due to random assignment.

To help students get a sense of the performance gap in the absence of Ramadan fasting, we informed students about the benchmark: the average Hui-Han gap between 2011 and 2015 is -16.4. Then we incentivized each student to make a guess on the 2016 Hui-Han CEE gap, as accurately as possible. For the 128 students in “*No Exemption\*No Information*,” the average answer we get is -17.9, as compared to the true value of -29.4. This suggests that Muslim students held highly biased priors, and believed that taking the exam during Ramadan has minimal impact on performance.<sup>32</sup>

## 5.2 Motivated Cognition and Exemption

Hypothesis 1 asserts that Muslim students distort their own beliefs when learning about the cost of taking the exam during Ramadan, which leads to an underestimation of the true cost. Hypothesis 2 claims that relaxing the religious practice (*Exemption*) would reduce such cognitive bias.

To test these hypotheses, we examine the accuracy of graph-reading by Muslim students in “*No Exemption\*Information*” and in “*Exemption\*Information*.” Specifically, for all the Muslim students who were asked to read the Hui-Han CEE gap figure, we estimate:

$$Gap_i = \alpha \cdot Exemption_i + X_i' \cdot \beta + \gamma \epsilon_i \quad (2)$$

where  $Gap_i$  is student  $i$ 's elicited prior of the Hui-Han CEE gap in 2016.  $Exemption_i$  is a dummy variable, which equals 1 if student  $i$  received the exemption, and 0 otherwise.  $X_i$  is a vector of individual characteristics,  $\gamma$  is a constant, and  $\epsilon_i$  is the error term.

Since the constant term  $\gamma$  reflects students' estimation of the gap in the absence of any exemption, if Hypothesis 1 holds,  $\gamma$  should be significantly smaller than the true gap (-29.4). Since  $\alpha$  reflects the extent to which the exemption could reduce the bias in graph-reading, if Hypothesis 2 holds,  $\alpha$  should be negative and significant.

As shown in Table 4, for those without exemptions, the average estimated gap is -24.4, which understates the true gap by about 5 points (statistically significant).<sup>33</sup> When randomly assigned the “pro-exemption” reading material, the estimated gap enlarged by 2 to 2.2 points, eliminating roughly 40% of the baseline cognitive bias. From Column 1 to Column 3, it is obvious that the coefficient of interest remains highly robust as we control for class fixed effects and the full set of individual controls, again confirming that the randomization was

---

<sup>32</sup>A T-test suggests that the average guess in this arm is not different from -16.4 in any statistically meaningful way.

<sup>33</sup>Compared to the control mean in Table 5 (-17.9), the control mean here is -24.4, suggesting that the Muslim students could partially absorb the information from the figure, consistent with our model assumption that belief distortion is not costless.

well-executed. In Columns 4 to 6, we also define an alternative outcome variable  $Deviation_i$ , which directly measures how far each student’s guess deviates from the true value (-29.4), and find similar results: the baseline bias is about 5.8 points, more than 30% of which could be eliminated by the religious intervention.<sup>34</sup>

These empirical patterns confirm the main hypothesis of this paper: the stringency of religious practices leads to motivated cognition regarding the cost of religious behaviors, and the relaxation of religious practice could help alleviate such cognitive bias.

## 5.3 Mechanisms

In this subsection, we investigate the underlying mechanisms behind our baseline findings.

### 5.3.1 Direct Impacts of Exemption

A potential concern is that, in addition to alleviating the students’ religious constraints, the exemption itself might also carry some information on the cost of Ramadan: for example, students might infer from the Imam’s statements that fasting could hurt exam performance, which makes the information presented in the Hui-Han CEE figure more credible. In principle, this interpretation should not confound our main findings, because our main test focuses entirely on the students’ reading of the information presented in Figure 1, and whether or not they find such information credible should be of no relevance.

Nevertheless, our experimental design allows us to directly investigate whether the exemption itself affects the students’ priors about the cost of Ramadan on exam performance, by comparing the elicited guesses on the enlarged 2016 Hui-Han gap between “*No Exemption\*No Information*” and “*Exemption\*No Information*.” Table 5 shows that the treatment effect of exemption alone is a precisely estimated zero, suggesting that providing the exemption alone does not change the students’ priors on the 2016 Hui-Han gap.

### 5.3.2 Extensive Margin Adjustment

In the environment of our model, when students face a binary choice for the religious practice (to fast or not during the CEE), their choice regarding the extent of belief manipulation is also binary; therefore, the cognition would be either highly accurate or much off (Hypothesis 3). The intuition for such polarized equilibria is as follows: if one chooses to keep fasting during the CEE, then it is optimal for him to self-rationalize this behavior by distorting the

---

<sup>34</sup>The difference between using the two outcome variables arises mainly from the fact that a small proportion of students overestimate the 2016 Hui-Han gap, which gets canceled out in the first but not the second definition.

undesirable information; on the contrary, if one decides to delay the fast until after the CEE, it would be optimal to accurately read the graph, as information distortion is costly.

To visualize whether this prediction is true, in Figure 4, we plot the distribution of “Deviation” by groups (*Exemption* vs. *No Exemption*). As can be seen, the treatment group (exemption) tends to have fewer “highly biased” students in the right tail, while having more “highly accurate” students in the left, as compared to the control group (no exemption). While this is obviously consistent with our hypothesis that the exemption shifts compliers at the extensive margin, there is also an alternative explanation: students only adjusted at the intensive margin, so students with deviation in the range “6 - 15” shifted to the bin “3 - 6,” and students in the bin “3 - 6” shifted to the bin “0 - 3.”<sup>35</sup> To rule out this alternative explanation, we conduct a simple balance test: if the “extensive adjustment” hypothesis is true, then the composition of students in the “3 - 6” bin should remain the same with or without the exemption, which should not be the case if the “intensive adjustment” explanation is true. Our balance test finds that, in the “3 - 6” deviation bin, all the baseline covariates are orthogonal to exemption, which provides suggestive evidence supporting Hypothesis 3.<sup>36</sup>

The fact that students with exemptions become highly accurate in graph-reading can be quantified using regression analysis. For students assigned to read the 2016 enlarged Hui-Han gap in CEE score, we define a dummy indicator for the accuracy of their estimation:  $Accuracy = 1$ , if the estimation is within two points of the true value, and 0 otherwise. We estimate equation 2 using  $Accuracy$  as the outcome variable, and the results are shown in Table 6. It can be seen that students who randomly received an exemption are 15 percentage points more likely to get highly accurate estimations, which is consistent with the patterns in Figure 4. The coefficient is robust to the inclusion of class fixed effects and the full set of individual characteristics.

### 5.3.3 Motivation Driven by Fasting History

Hypothesis 4 indicates that those who strictly followed Ramadan fasting in the previous years tend to be more religious, and therefore they should have stronger incentives to manipulate their beliefs to underestimate the cost of Ramadan, and in the meantime should also be more responsive to the exemptions.

In the survey, we asked each student “whether you strictly practiced Ramadan fasting

---

<sup>35</sup>It is also worth noting that a 15-point deviation suggests blatant reality denial: despite the huge drop in Hui-Han gap shown in figure 1, the students give up potential monetary rewards and insist that the trend remains flat!

<sup>36</sup>Some covariates, such as “access to computers” and “whether always kept fasting,” are good predictors of “Deviation.” These variables do not show up significantly in our balance test.

(never broke a fast) throughout high school.” Roughly 54% of the students answered “Yes” to this question, and the ratio is balanced across the four arms due to random assignment. To explore the heterogeneity associated with previous fasting behavior and test Hypothesis 4, we estimate the following modified version of Equation 2:

$$Gap_i = \alpha \cdot Fasted_i + \beta \cdot Exemption_i + \gamma \cdot Fasted_i \cdot Exemption_i + X'_i \cdot \delta + \eta + \epsilon_i \quad (3)$$

where  $Fasted_i$  equals 1 if student  $i$  strictly practiced Ramadan fasting during high school, and 0 otherwise. Under this specification,  $\alpha$  measures the extra baseline bias of the students who strictly practiced fasting,  $\beta$  identifies the treatment effect of the exemption on students who did not strictly practice fasting, and  $\gamma$  identifies the additional treatment effect of the exemption on students who strictly practiced fasting. According to Hypothesis 4, we expect that  $\alpha > 0$ ,  $\gamma < 0$ , and  $\beta + \gamma < 0$ .

As shown in Table 7, the negative and significant  $\alpha$  indicates that students who strictly practiced fasting had larger downward biases than their non-fasting counterparts. The statistical insignificance and small magnitude of  $\beta$  implies that receiving the religious intervention does not have any statistically meaningful impacts on students who did not strictly practice fasting during high school. The large, negative and significant  $\gamma$  implies substantial heterogeneity in treatment effects across those who strictly fasted and those who did not. Estimates of “ $\beta + \gamma$ ” remain highly significant and robust across different specifications, suggesting that our treatment effect is concentrated among those who strictly practiced Ramadan fasting. Therefore, the empirical results are highly consistent with our theoretical predictions, further suggesting that the stringency of religious practices, rather than confounding factors, are driving the motivated cognition observed in this context.

### 5.3.4 Motivation Driven by Valuation for College

Hypothesis 5 states that students who value college education highly would have stronger motivated beliefs, but when provided with exemptions, they would also respond more strongly and debias more. The intuition is that these students care more about the CEE scores, so in the absence of exemptions, they can avoid more utility loss by choosing to believe that fasting is not bad for CEE performance; however, when given exemptions, their higher valuation for the CEE makes them more likely to choose to delay the fast, which leads to more accurate readings of the Hui-Han CEE gap.

To test this hypothesis, we estimate a modified version of Equation 3, where we replace the “*Fasted*” dummy with a “*High Stake*” dummy, which measures whether the student self-reports having high valuation for college education. As reported in Table 8, the findings are



qualitatively consistent with Hypothesis 5, but relatively weak in terms of statistical power.

### 5.3.5 Placebo Test

As stated in Hypothesis 6, receiving the exemption to delay fasting should not affect the cognitive accuracy regarding topics unrelated to either the CEE or Ramadan fasting, such as the Sino-Japanese income gap (Figure 3).

Therefore, to further rule out alternative mechanisms, we conduct a placebo test, where some students read the religious article (exemption) and were required to estimate the Sino-Japanese income gap (*Exemption\*No Information*), and others read the placebo article (about art) and were required to estimate the same Sino-Japanese income gap (*No Exemption\*No Information*). Estimating Equation 2 for students who estimated the Sino-Japanese income gap from Figure 3 would therefore estimate the “placebo effect of exemption on cognitive accuracy.” Note that, being Chinese, these students could very well have their own motivated beliefs regarding the Sino-Japanese gap, but what we focus on here is that such motivated beliefs should not be affected by religious exemptions.

As can be seen in Table 9, students in general tend to underestimate the Sino-Japanese income gap.<sup>37</sup> But, importantly, reading about the religious exemption has no statistically meaningful effect on the accuracy of reading the Sino-Japanese income gap, suggesting that our findings are indeed driven by religion-motivated learning, rather than alternative mechanisms.

### 5.3.6 Active Information Distortion

Another interpretation of our result is that maybe the religious reading (*Exemption*) did not relax the religious constraint, but simply triggered students’ interest/curiosity in the topic of Ramadan, so that they gave more attention to the Hui-Han figure, which led to more accurate readings.

This interpretation is inconsistent with the previous findings, which showed that the baseline bias is driven by fasting history and valuation for college, unless students who never broke a fast (and students who valued college more highly) were also those with no interest/curiosity in Ramadan in the absence of the religious reading.

To further address this concern, we propose another test, where we compare the accuracy of graph-reading across all four arms. Since the Hui-Han figure ranges from 0 to -40, and the Sino-Japanese figure ranges from -25000 to -45000, a 2-point deviation in the former is equivalent in scale to a 1000-dollar deviation in the latter. Therefore, we can extend the

---

<sup>37</sup>The true gap is 30771.29, while the students in the control group on average read -28433.92.

definition of “Accuracy” to every student in any of the four arms: it equals one if the student either read the Hui-Han gap and made an error within 2 points, or read the Sino-Japanese gap and made an error within 1000 dollars; and zero otherwise.

Following this definition, we are able to compare the accuracy of graph-reading across the 4 different arms. Since the Hui-Han information is more relevant for those Muslim students about to take the CEE during Ramadan, if the results are indeed driven by attention (curiosity/interest), we should expect *No Exemption\*Info* to be more accurate than *No Exemption\*No Info* and *Exemption\*No Info*. However, as shown in Figure 10, the students are least accurate when reading the Hui-Han figure without an exemption, even less accurate than when reading the Sino-Japanese gap.

This finding suggests that the motivated bias in the baseline was driven by active information distortion rather than lack of attention, which supports our framework and rules out the alternative interpretation.

## 5.4 Fasting Decisions

We have demonstrated that our treatments have substantially changed students’ beliefs about the impact of Ramadan fasting on exam performance. As predicted by Hypothesis 7, changes in beliefs would also lead to changes in fasting decisions, which we test empirically in this subsection.

The main challenge here is that the fasting decision is essentially unobservable, and direct elicitation of fasting attitudes in the survey may raise social image concerns, and therefore lead to biased answers. To circumvent these problems, we use a “list experiment” approach to elicit students’ attitudes on whether it is acceptable to stop fasting during the CEE. The list experiment is different from direct elicitation in that it asks students “among the following five statements, how many do you agree with?” Among the five statements, one is about fasting attitudes, which we are interested in, and the other four statements are related to the CEE but irrelevant to students’ religion. Students only have to tell us *how many* of the statements they agree with, and do not need to indicate specifically which statements they agree with, which alleviates the social image concerns related to directly admitting to willingness to break Ramadan fasting.<sup>38</sup> Under these procedures, students should be free to state their attitudes in a roundabout way.<sup>39</sup>

As asserted by Hypothesis 7, when students are generally unaware of the harm of fasting

---

<sup>38</sup>To minimize the potential social pressure, we also reassure the students that their responses will not be released.

<sup>39</sup>The proportion of students who agree/disagree with all 5 statements is extremely low (below 2%), which guarantees the effectiveness of the list experiment in “hiding” the fasting attitude of an individual student.

during the exam, both “accurate information” and “exemption” may be helpful in changing fasting attitudes: the former increases the cost of fasting, while the latter reduces the return. While the model does not specify which type of intervention is more effective, it does predict that their combination will be most effective in changing fasting attitudes. This is driven by an interaction effect between the exemption and the information: relaxing the stringency of religious norms could lead to better acquisition of undesirable information (regarding the cost of religious activities), which further changes religious behavior.

To test these predictions, we first compare the average number of statements that students agree with in each of the four arms (Figure 5). It can be seen from Figure 5 that both “information alone (*No Exemption\*Information*)” and “exemption alone (*Exemption\*No Information*)” are helpful in changing students’ fasting attitudes, and religious reading appears to be more effective. Importantly, the combination of both exemption and information persuades the most people not to fast during the CEE, which is consistent with the prediction of our theoretical framework. To quantify these findings, we estimate the following equation:

$$List_i = \gamma_1 + \gamma_2 Exemp \cdot No Info + \gamma_3 No Exemp \cdot Info + \gamma_4 Exemp \cdot Info + X'_i \beta + \epsilon_i \quad (4)$$

where  $List_i$  is the number of statements that student  $i$  agrees to in the list experiment.  $\gamma_1$  is a constant representing the average of  $list$  for students in group “*No Exemp \* No Info*,” while  $\gamma_2$ ,  $\gamma_3$ , and  $\gamma_4$  represent the point estimates of different treatment effects relative to the control group. It follows from Table 11 that the statistical evidence we find is consistent with the visual representation, and robust across different specifications. The positive and significant  $\gamma_2$  represents the mechanical effect of allowing students to delay fasting; the positive yet insignificant  $\gamma_3$  suggests that information treatment alone is not as effective as the exemption; whereas the large and significant  $\gamma_4$  suggests that combining both information and exemption will create the strongest effect in persuading students to stop fasting during the CEE.

The fact that the magnitude of  $\gamma_4$  is larger than the coefficients for  $\gamma_2$  and  $\gamma_3$  combined suggests that, in addition to the direct effects of relaxing religious constraints and receiving information on religious behavior, there is also a more subtle interaction effect, where the relaxation of religious constraints leads to better understanding of the information, which further affects religious behavior. The T-test for this additional interaction effect, however, lacks statistical power due to sample size limitations.

Ideally, we would like to also investigate the subsequent impacts of our interventions on the actual fasting behaviors and CEE exam performance of these students. However, to ensure that our interventions could potentially benefit more students, upon finishing the

survey, we provided all students access to the “pro-exemption reading material” and the “Hui-Han CEE gap graph.” As a result, beyond the survey experiment, we no longer have any experimental variation to identify the eventual impacts on fasting behaviors and exam outcomes.

## 6 Conclusion

In this paper, we first document that taking the CEE during Ramadan in 2016 had a significant negative impact on the performance of Muslim students in China. We then collected “pro-exemption” statements from well-respected Chinese Muslim religious leaders encouraging students to delay the fast until after the CEE, which we randomly distributed to Muslim students who were about to take the CEE during Ramadan in 2018, creating experimental variation in the (perceived) stringency of religious practice. After that, we presented all students with the same information regarding the cost of taking the CEE during Ramadan, and find that students who thought they were required to fast during the exam were more likely to distort this undesirable signal, by underestimating the negative impacts of Ramadan on the CEE score of Muslim students; but for those students who were randomly selected to receive exemptions to delay the Ramadan fasting, as much as 40% of such cognitive bias could be eliminated.

Further analysis suggests that the baseline treatment effects are driven by adjustment at the extensive margin (students persuaded by the exemptions interpreted the signal highly accurately), and the baseline bias and treatment effects are both particularly strong for more religious students who strictly practiced Ramadan fasting throughout high school. Reassuringly, our placebo test confirms that the exemption only affects the cognition of religious information (Hui-Han CEE gap), but not the cognition of non-religious information (Sino-Japanese Gap). Our analysis also suggests that while providing either information or exemption alone could potentially change students’ fasting behavior, they are most effective when combined, due to the existence of an interaction effect: the exemption could help students better interpret the information on the cost of Ramadan, leading to more informed fasting decisions (increased willingness to delay the fast for the CEE).

In addition to contributing to the growing strands of literature on motivated beliefs and religious participation, the results in this paper could potentially also shed light on public policy. Specifically, our findings imply that the dissemination of accurate information and the relaxation of religious constraints work as strong complements when people appear to be ignorant about the adverse impacts of certain religious practices. Therefore, in order to minimize the cost due to conflicts between religion and other aspects of life, if accommodating

to the religious schedule is infeasible, a second-best solution is to combine “relaxation of religious constraint” with “powerful reminders of the real-life costs of religious behaviors” as a compound policy instrument. More generally, our findings also suggest that, to reduce polarization in important policy discussions, in addition to providing convincing scientific evidence, it is also important to identify and tackle the psychological motives that could potentially prevent one from acquiring accurate information.

## References

- Affi, ZEM (1997) “Daily practices, study performance and health during the Ramadan fast,” *Journal of the Royal Society of Health*, Vol. 117, pp. 231–235.
- Almond, Douglas and Bhashkar Mazumder (2011) “Health capital and the prenatal environment: the effect of Ramadan observance during pregnancy,” *American Economic Journal: Applied Economics*, Vol. 3, pp. 56–85.
- Almond, Douglas, Bhashkar Mazumder, and Reyn Van Ewijk (2015) “In utero Ramadan exposure and children’s academic performance,” *The Economic Journal*, Vol. 125, pp. 1501–1533.
- Ambuehl, Sandro (2017) “An Offer You Can’t Refuse? Incentives Change How We Inform Ourselves and What We Believe,” Technical report, CESifo Group Munich.
- Augenblick, Ned, Jesse M Cunha, Ernesto Dal Bó, and Justin M Rao (2016) “The economics of faith: using an apocalyptic prophecy to elicit religious beliefs in the field,” *Journal of Public Economics*, Vol. 141, pp. 38–49.
- Azzi, Corry and Ronald Ehrenberg (1975) “Household allocation of time and church attendance,” *Journal of Political Economy*, Vol. 83, pp. 27–56.
- Bénabou, Roland (2015) “The economics of motivated beliefs,” *Revue d’économie politique*, Vol. 125, pp. 665–685.
- Bénabou, Roland and Jean Tirole (2011) “Identity, morals, and taboos: Beliefs as assets,” *The Quarterly Journal of Economics*, Vol. 126, pp. 805–855.
- (2016) “Mindful economics: The production, consumption, and value of beliefs,” *Journal of Economic Perspectives*, Vol. 30, pp. 141–64.
- Berman, Eli (2000) “Sect, subsidy, and sacrifice: an economist’s view of ultra-orthodox Jews,” *The Quarterly Journal of Economics*, Vol. 115, pp. 905–953.
- Campante, Filipe and David Yanagizawa-Drott (2015) “Does religion affect economic growth and happiness? Evidence from Ramadan,” *The Quarterly Journal of Economics*, Vol. 130, pp. 615–658.
- Chen, Ting, James Kai-sing Kung, and Chicheng Ma (2017) “Long Live Keju! The Persistent Effects of China’s Imperial Examination System.”
- Cheng, Ing-Haw, Sahil Raina, and Wei Xiong (2014) “Wall Street and the housing bubble,” *American Economic Review*, Vol. 104, pp. 2797–2829.
- Chew, Soo Hong, Wei Huang, and Xiaojian Zhao (2019) “Motivated false memory,” *Available at SSRN 2127795*.
- Conlisk, John (1996) “Why bounded rationality?” *Journal of economic literature*, Vol. 34, pp. 669–700.

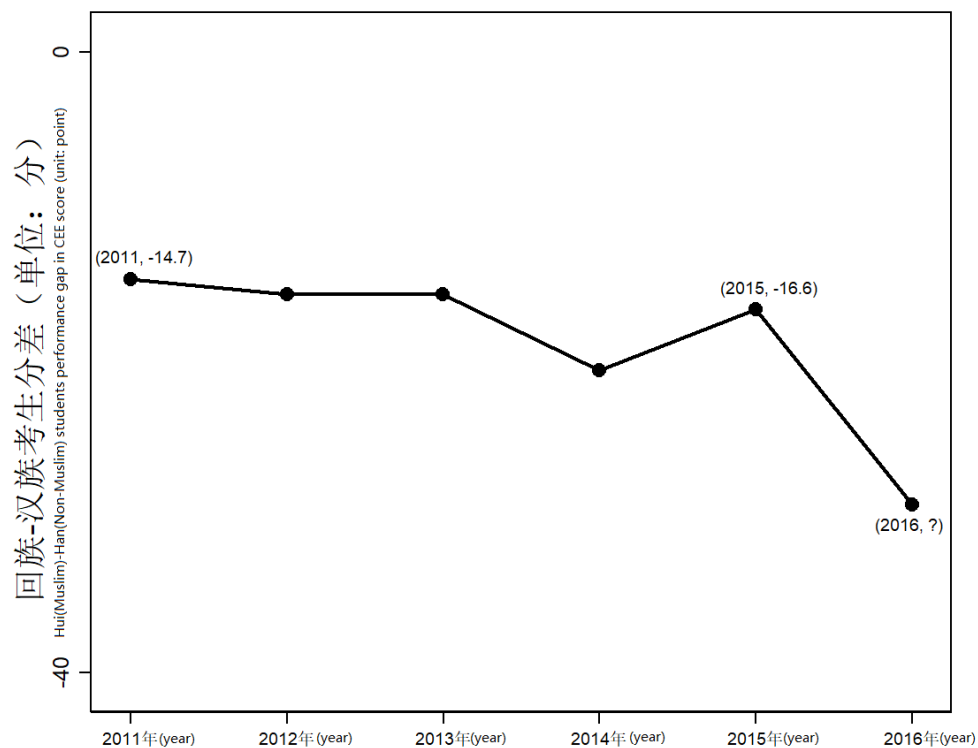
- Dana, Jason, Roberto A Weber, and Jason Xi Kuang (2007) “Exploiting moral wiggle room: experiments demonstrating an illusory preference for fairness,” *Economic Theory*, Vol. 33, pp. 67–80.
- Di Tella, Rafael, Ricardo Perez-Truglia, Andres Babino, and Mariano Sigman (2015) “Conveniently Upset: Avoiding Altruism by Distorting Beliefs about Others’ Altruism,” *American Economic Review*, Vol. 105, pp. 3416–42.
- Eil, David and Justin M Rao (2011) “The good news-bad news effect: Asymmetric processing of objective information about yourself,” *American Economic Journal: Microeconomics*, Vol. 3, pp. 114–38.
- Engelmann, Jan, Maël Lebreton, Peter Schwardmann, Joel J van der Weele, and Li-Ang Chang (2019) “Anticipatory anxiety and wishful thinking.”
- Exley, Christine and Judd B Kessler (2018) “Motivated Errors.”
- Exley, Christine L (2016) “Excusing selfishness in charitable giving: The role of risk,” *The Review of Economic Studies*, Vol. 83, pp. 587–628.
- Figlio, David N and Joshua Winicki (2005) “Food for thought: The effects of school accountability plans on school nutrition,” *Journal of Public Economics*, Vol. 89, pp. 381–394.
- Hallak, Mohamad H and Mohammad Zafar A Nomani (1988) “Body weight loss and changes in blood lipid levels in normal men on hypocaloric diets during Ramadan fasting,” *The American Journal of Clinical Nutrition*, Vol. 48, pp. 1197–1210.
- Harrison, Glenn W and John A List (2004) “Field experiments,” *Journal of Economic literature*, Vol. 42, pp. 1009–1055.
- Hart, P Sol and Erik C Nisbet (2012) “Boomerang effects in science communication: How motivated reasoning and identity cues amplify opinion polarization about climate mitigation policies,” *Communication Research*, Vol. 39, pp. 701–723.
- Hossain, Tanjim and Ryo Okui (2013) “The binarized scoring rule,” *Review of Economic Studies*, Vol. 80, pp. 984–1001.
- Huffman, David, Collin Raymond, and Julia Shvets (2018) “Persistent overconfidence and biased memory: Evidence from managers.”
- Iannaccone, Laurence R (1992) “Sacrifice and stigma: reducing free-riding in cults, communes, and other collectives,” *Journal of political economy*, Vol. 100, pp. 271–291.
- (1998) “Introduction to the Economics of Religion,” *Journal of economic literature*, Vol. 36, pp. 1465–1495.
- Iyer, Sriya (2016) “The new economics of religion,” *Journal of Economic Literature*, Vol. 54, pp. 395–441.



- Jia, Ruixue and Hongbin Li (2016) “Access to elite education, wage premium, and social mobility: The truth and illusion of china’s college entrance exam,” *Stanford Center for International Development, Working Paper*.
- Kahneman, Daniel (2003) “Maps of bounded rationality: Psychology for behavioral economics,” *American economic review*, Vol. 93, pp. 1449–1475.
- Karaagaoglu, Nilgun and Sevinc Yucecan (2000) “Some behavioral changes observed among fasting subjects, their nutritional habits and energy expenditure in Ramadan,” *International Journal of Food Sciences and Nutrition*, Vol. 51, p. 125.
- Kunda, Ziva (1990) “The case for motivated reasoning,” *Psychological bulletin*, Vol. 108, p. 480.
- Kuran, Timur (2018) “Islam and economic performance: Historical and contemporary links,” *Journal of Economic Literature*, Vol. 56, pp. 1292–1359.
- Lancet (2009) “Ramadan: health effects of fasting,” *The Lancet*.
- Leiper, John Beattie and AM Molla (2003) “Effects on health of fluid restriction during fasting in Ramadan,” *European Journal of Clinical Nutrition*, Vol. 57, p. S30.
- Majid, Muhammad Farhan (2015) “The persistent effects of in utero nutrition shocks over the life cycle: Evidence from Ramadan fasting,” *Journal of Development Economics*, Vol. 117, pp. 48–57.
- Mobius, Markus M, Muriel Niederle, Paul Niehaus, and Tanya S Rosenblat (2011) “Managing self-confidence: Theory and experimental evidence,” Technical report, National Bureau of Economic Research.
- Montgomery, James D (1996) “Contemplations on the economic approach to religious behavior,” *The American economic review*, Vol. 86, pp. 443–447.
- Nyhan, Brendan and Jason Reifler (2010) “When corrections fail: The persistence of political misperceptions,” *Political Behavior*, Vol. 32, pp. 303–330.
- Oosterbeek, Hessel and Bas van der Klaauw (2013) “Ramadan, fasting and educational outcomes,” *Economics of Education Review*, Vol. 34, pp. 219–226.
- Oster, Emily, Ira Shoulson, and E Dorsey (2013) “Optimal expectations and limited medical testing: Evidence from Huntington disease,” *American Economic Review*, Vol. 103, pp. 804–30.
- Plutzer, Eric and Michael Berkman (2008) “Trends: Evolution, creationism, and the teaching of human origins in schools,” *Public Opinion Quarterly*, Vol. 72, pp. 540–553.
- Priest, Susanna Hornig (2000) “US public opinion divided over biotechnology?” *Nature biotechnology*, Vol. 18, p. 939.

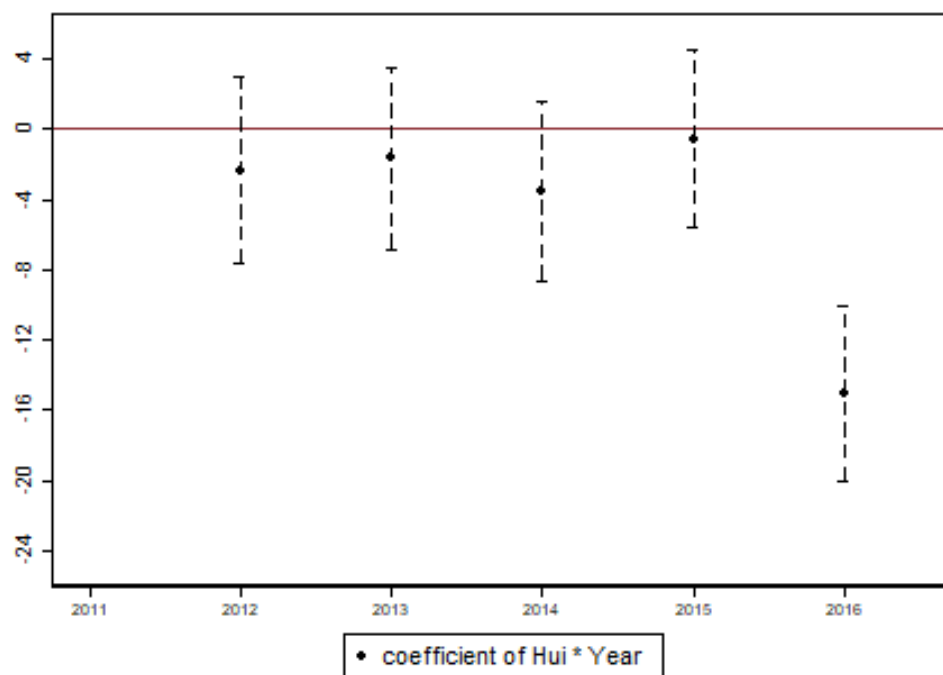
- Redlawsk, David P (2002) “Hot cognition or cool consideration? Testing the effects of motivated reasoning on political decision making,” *The Journal of Politics*, Vol. 64, pp. 1021–1044.
- Schofield, Heather (2014) “The economic costs of low caloric intake: Evidence from india,” *Unpublished Manuscript*.
- Simon, Herbert A (1955) “A behavioral model of rational choice,” *The quarterly journal of economics*, Vol. 69, pp. 99–118.
- Stark, Rodney and Roger Finke (2000) *Acts of faith: Explaining the human side of religion*: Univ of California Press.
- Taber, Charles S and Milton Lodge (2006) “Motivated skepticism in the evaluation of political beliefs,” *American Journal of Political Science*, Vol. 50, pp. 755–769.
- Ziaee, V, M Razaee, Z Ahmadinejad, H Shaikh, R Yousefi, L Yarmohammadi, F Bozorgi, and MJ Behjati (2006) “The changes of metabolic profile and weight during Ramadan fasting,” *Singapore Medical Journal*, Vol. 47, p. 409.
- Zimmermann, Florian (2020) “The dynamics of motivated beliefs,” *American Economic Review*, Vol. 110, pp. 337–61.

Figure 1: Hui-Han CEE Gap (2011-2016)



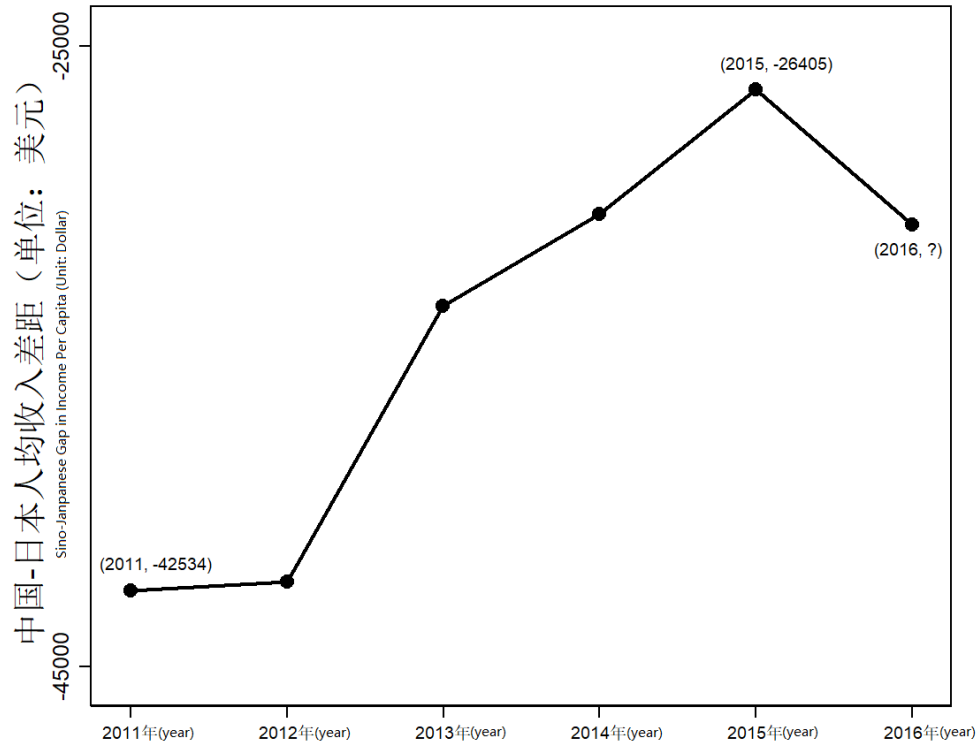
Note: This figure displays the Hui-Han average CEE score gap for all urban students in Ningxia between 2011 and 2016. This is the same figure that was presented to the students in our experimental sample (with Chinese labels). The first dimension of the coordinates marked beside a data point is year (horizontal axis) and the second dimension of the coordinates (vertical axis) is the magnitude of the gap.

Figure 2: Event Study: Hui-Han CEE Gap



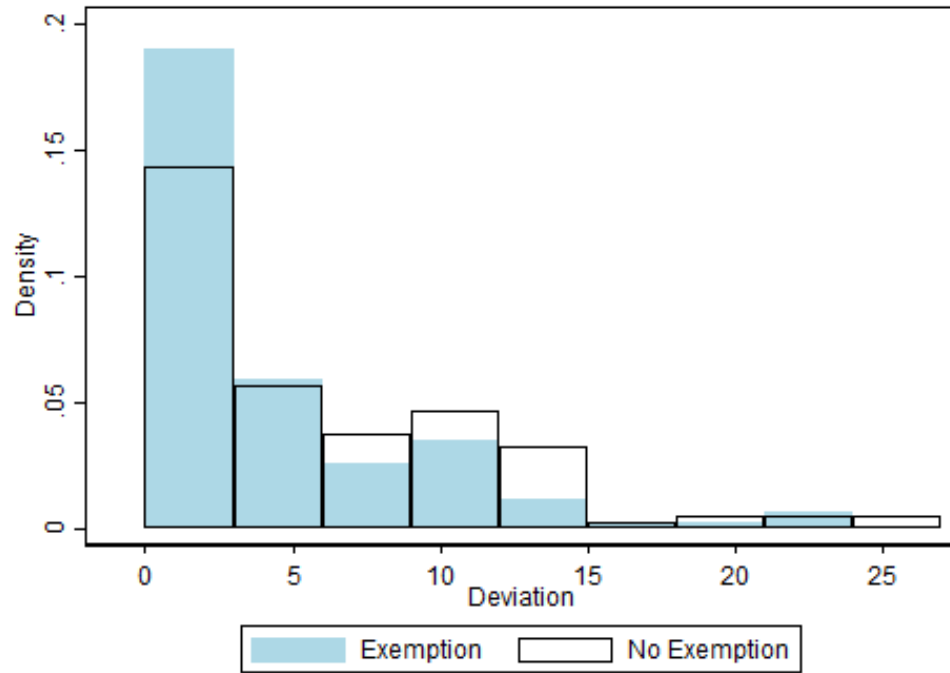
Note: This figure presents the event study estimates of the dynamics of the Hui-Han CEE score gap, with 5% confidence intervals plotted around each coefficient. As can be seen, the Hui-Han gap remained highly flat during 2011-2015, but enlarged significantly in 2016.

Figure 3: Sino-Japanese Income Gap (2011-2016)



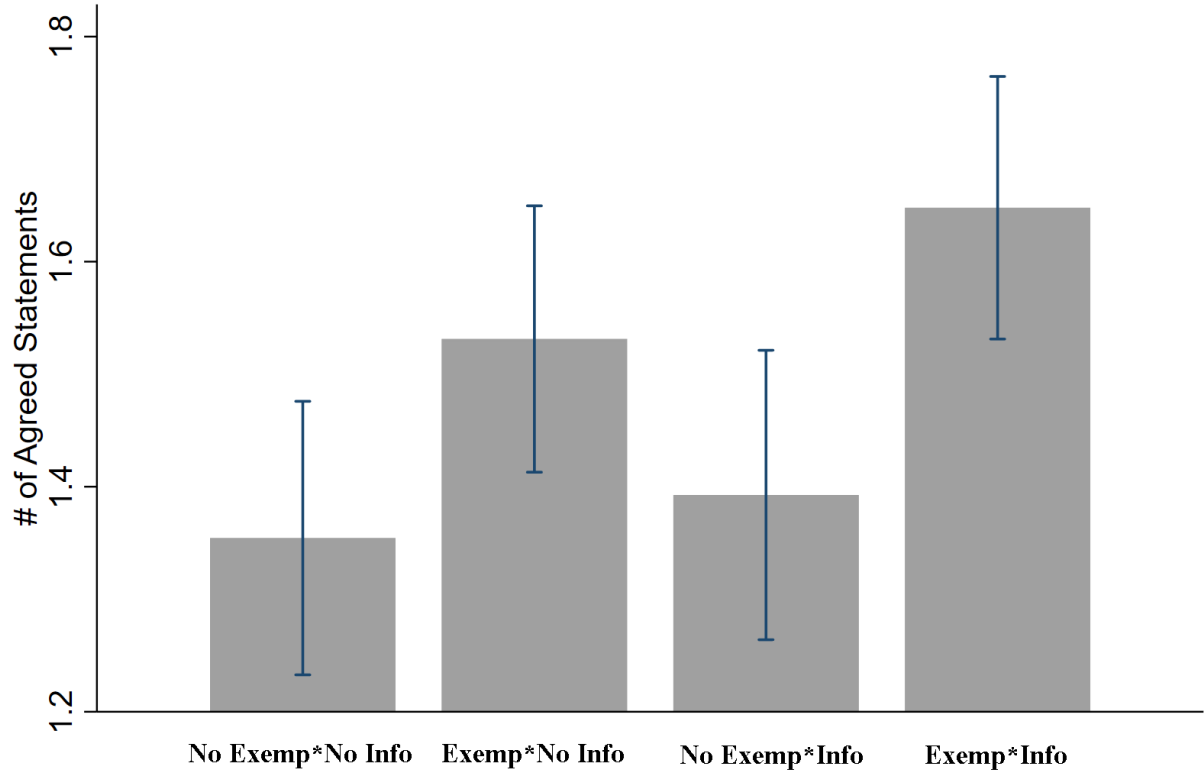
Note: This figure displays the gap between GDP pc of China and that of Japan during 2011-2016. This is the same figure that was presented to the students in our experimental sample (with Chinese labels). The first dimension of the coordinates marked beside a data point is year (horizontal axis) and the second dimension of the coordinates is the magnitude of gap.

Figure 4: Distribution of Guesses of 2016 Enlarged Hui-Han CEE Gap



Note: This figure depicts the distribution of the guess accuracy for treatment  $T_{info} * T_{religion}$  (the green bins) and treatment  $T_{info} * C_{religion}$  (the white bins). Each bin covers a 3-point interval. The vertical axis is the density of distribution. The horizontal axis describes how much students' guess is off the accurate information we provide about the gap.

Figure 5: Mean of Number of Agreed Response for List Experiment Across Treatments



Note: This graph plots the mean of number of statements that students agree with for each treatment the list experiment. Among 5 statements in the list experiment, students can choose to agree with 0-5 of them without specifying which statements exactly they agree with.



Table 1: Impacts of Ramadan on CEE Score

	(1)	(2)	(3)	(4)
	Score	Score	Score	Score
Hui*Year_2012	-0.9527 (2.7122)	-2.3302 (2.7103)		
Hui*Year_2013	-1.0004 (2.6467)	-1.6581 (2.6448)		
Hui*Year_2014	-2.7471 (2.6090)	-3.5299 (2.6067)		
Hui*Year_2015	-1.9583 (2.5705)	-3.1176 (2.5686)		
Hui*Year_2016	-14.5265*** (2.5613)	-15.0378*** (2.5596)		
Hui	-14.6394*** (1.9194)	-13.3878*** (1.9183)	-15.5981*** (0.8138)	-15.5981*** (0.8138)
Hui*Ramadan			-12.8275*** (1.8799)	-12.8275*** (1.8799)
Mean of Dep Variable	383.218	383.218	383.218	383.218
Year FE	Yes	No	Yes	No
STEM-Year FE	No	Yes	No	Yes
Number of Observations	124369	124369	124369	124369
R squared	0.022	0.025	0.025	0.025

Note: This table presents the effects of taking the CEE during Ramadan on the relative performance of Muslim students. In columns 1 and 2, we interact Muslim dummy with year dummies, and see an abrupt increase the Hui-Han gap in 2016, the year that Ramadan overlaps with the CEE. In columns 3 and 4, we collapse the pre-treatment years into a larger control group, and get quantitatively similar results. In columns 1 and 3, we control for Year FE; in columns 2 and 4, we control for STEM-by-Year FE. Standard errors in parentheses are clustered at the high school level. \* significant at 10%, \*\* significant at 5%, \*\*\* significant at 1%.

Table 2: 2\*2 Experimental Design

<b>Information</b> <b>Religion</b>	Read the gap in CEE score between Muslim and Non- Muslim students	Read the Sino-Japanese Gap in GDP pc
Exemption to delay fast for the CEE	<b>Exemp*Info</b>	<b>Exemp*No Info</b>
No Exemption	<b>No Exemp*Info</b>	<b>No Exemp*No Info</b>

Note: This table summarizes the 2\*2 design of our survey experiment. Randomly, half of the Muslim students get exemptions to delay fast until after the CEE, while the other half of students do not get such exemptions. Then we cross-randomize between these two groups, such that half of them are required to read a graph on “Hui-Han CEE gap,” while the other half of them required to read a graph on “Sino-Japanese income gap.”

Table 3: Balance Test

Variables	All		No Exp*No Info	Exp*No Info	No Exp*Info	Exp*Info	Anova Test	
	Mean	Std.Dev	Mean	Mean	Mean	Mean	F-stat	p-value
Gender: male	0.405	0.491	0.445	0.398	0.393	0.387	0.38	0.765
Parents with college education	0.045	0.208	0.016	0.047	0.044	0.070	1.57	0.195
Access to computer at home	0.390	0.488	0.390	0.375	0.400	0.394	0.06	0.980
Access to Internet at home	0.814	0.389	0.859	0.758	0.837	0.803	1.67	0.172
Boarding at school	0.831	0.375	0.852	0.82	0.859	0.796	0.84	0.475
Risk loving	2.461	2.125	2.480	2.438	2.652	2.282	0.71	0.548
Perceived value of college	3.692	1.186	3.543	3.680	3.919	3.620	2.51	0.058*
STEM track	0.610	0.488	0.609	0.625	0.630	0.577	0.32	0.810
Honors class	0.334	0.472	0.320	0.336	0.385	0.296	0.88	0.454
Pray everyday	0.589	0.492	0.641	0.555	0.607	0.556	0.95	0.418
Never broke a fast	0.535	0.499	0.602	0.469	0.504	0.563	1.85	0.137
Mock exam score	365.856	62.899	371.006	368.126	366.081	358.953	0.91	0.435
Observations	533		128	128	135	142		

Note: These two panels present the balance tests across the four different arms in the 2\*2 experimental design. As can be seen, most variables are well-balanced, indicating that the randomization was well-implemented. “Risk loving” and “Perceived value of college” are measured using a five-point Likert scale. \* significant at 10%, \*\* significant at 5%, \*\*\* significant at 1%.

Table 4: The Effect of Exemption on Graph Reading (Hui-Han Gap)

	(1)	(2)	(3)	(4)	(5)	(6)
	Gap	Gap	Gap	Deviation	Deviation	Deviation
Exemption	-1.9032** (0.7387)	-1.9881*** (0.7387)	-2.1985*** (0.7451)	-1.6436*** (0.6295)	-1.6625*** (0.6346)	-1.8617*** (0.6396)
Constant	-24.3954*** (0.5289)			5.8576*** (0.4507)		
Mean of Control	-24.395	-24.395	-24.395	5.858	5.858	5.858
Class FE	No	Yes	Yes	No	Yes	Yes
Control Variables	No	No	Yes	No	No	Yes
Number of Observations	277	276	274	277	276	274
R squared	0.024	0.151	0.233	0.024	0.144	0.227

Note: This table presents the effects of receiving exemption to delay fast on the accuracy of reading the 2016 enlarged Hui-Han gap in CEE performance. As shown in columns 1-3, the average gap read by students is -25.4, 4 points smaller than the true value of -29.4; receiving an exemption would make the guess 2 points closer to the true value. As shown in columns 4-6, using the “absolute deviation from true value” as outcome variable produces similar results. Robust standard errors are in parentheses. \* significant at 10%, \*\* significant at 5%, \*\*\* significant at 1%.

Table 5: The Effect of Exemption on Prior

	(1)	(2)	(3)	(4)	(5)	(6)
	Gap	Gap	Gap	Deviation	Deviation	Deviation
Exemption	-0.0699 (0.9995)	-0.2167 (1.0141)	-0.1481 (1.0586)	-0.1610 (0.7726)	-0.3070 (0.7718)	-0.4357 (0.8188)
Constant	-17.9325*** (0.7082)			12.3602*** (0.5474)		
Mean of Control	-17.933	-17.933	-17.933	12.360	12.360	12.360
Class FE	No	Yes	Yes	No	Yes	Yes
Control Variables	No	No	Yes	No	No	Yes
Number of Observations	247	247	246	247	247	246
R squared	0.000	0.116	0.218	0.000	0.143	0.217

Note: This table presents the effects of religious intervention alone on updating prior. As shown in the table, the mean of the elicited 2016 Hui-Han gap is -17.97, close to the -16.4 gap between 2011 and 2015, much smaller than the true value of -29.4, indicating that Muslim students have acute downward bias in their priors. Receiving the exemption does not update this prior in any substantial way. As shown in columns 4-6, using the “absolute deviation from true value” as outcome variable produces similar results. Robust standard errors are in parentheses. \* significant at 10%, \*\* significant at 5%, \*\*\* significant at 1%.

Table 6: Extensive Margin Adjustment

	(1)	(2)	(3)
	Accuracy	Accuracy	Accuracy
Exemption	0.1152* (0.0594)	0.1312** (0.0618)	0.1573** (0.0630)
Constant	0.3778*** (0.0426)		
Mean of Control	0.378	0.378	0.378
Class FE	No	Yes	Yes
Control Variables	No	No	Yes
Number of Observations	277	276	274
R squared	0.013	0.077	0.151

Note: This table presents the effect of receiving an exemption on the likelihood of reading the 2016 Hui-Han CEE gap highly accurately. “Accuracy” is a dummy variable indicating whether the deviation from true value (-29.4) is within two points. As shown, students with exemptions are 16 percentage points more likely to make such accurate guesses. Robust standard errors are in parentheses. \* significant at 10%, \*\* significant at 5%, \*\*\* significant at 1%.

Table 7: Heterogeneity Based on Fasting History

	(1)	(2)	(3)	(4)	(5)	(6)
	Gap	Gap	Gap	Deviation	Deviation	Deviation
Exemption	-0.5822 (1.0672)	-0.9368 (1.0734)	-0.8654 (1.0935)	-0.2870 (0.9092)	-0.5661 (0.9238)	-0.5823 (0.9372)
Fast	2.5805** (1.0425)	2.8892*** (1.0518)	2.9742*** (1.0753)	2.1833** (0.8881)	2.3905*** (0.9052)	2.4848*** (0.9216)
Exemption*Fast	-2.6181* (1.4617)	-2.2005 (1.4859)	-2.5483* (1.5348)	-2.6392** (1.2453)	-2.2253* (1.2788)	-2.4455* (1.3154)
Constant	-25.6952*** (0.7399)			4.7579*** (0.6303)		
Mean of Control	-24.395	-24.395	-24.395	5.858	5.858	5.858
Class FE	No	Yes	Yes	No	Yes	Yes
Control Variables	No	No	Yes	No	No	Yes
Number of Observations	277	276	274	277	276	274
R squared	0.045	0.177	0.242	0.046	0.167	0.238

Note: This table presents heterogeneous treatment effects of exemption based on fasting history. As shown, students who strictly followed the Ramadan fasting during high school had larger downward bias to start with, and responded to the religious intervention by eliminating such cognitive bias. On the contrary, students who did not strictly follow Ramadan fasting were not responsive to the exemption. Robust standard errors are in parentheses. \* significant at 10%, \*\* significant at 5%, \*\*\* significant at 1%.

Table 8: Heterogeneity Based on Valuation for College

	(1)	(2)	(3)	(4)	(5)	(6)
	Gap	Gap	Gap	Deviation	Deviation	Deviation
Exemp	-0.6302 (1.1463)	-0.8284 (1.0363)	-1.5129 (1.1299)	-0.1375 (1.0021)	-0.2705 (0.8102)	-0.7869 (0.9496)
High Stake	1.6253 (0.9799)	1.8244* (0.9927)	1.4605 (1.0089)	1.7088* (0.8758)	1.9717** (0.8203)	1.5580* (0.8946)
Exemp*High Stake	-1.9577 (1.2178)	-1.6064 (1.1791)	-1.0526 (1.2647)	-2.2478* (1.1994)	-1.9938* (1.0543)	-1.6693 (1.0971)
Constant	-25.4623*** (0.9796)			4.6856*** (0.8127)		
Mean of Control	-25.371	-25.371	-25.371	5.015	5.015	5.015
Class FE	No	Yes	Yes	No	Yes	Yes
Control Variables	No	No	Yes	No	No	Yes
Number of Observations	274	274	274	274	274	274
R squared	0.032	0.166	0.232	0.036	0.162	0.230

Note: This table presents heterogeneous treatment effects of exemption based on perceived valuation of college education. As shown, students who reported higher valuation for college had larger downward bias to start with, and responded to the religious intervention by eliminating such cognitive bias. On the contrary, students who did not value college education were not responsive to the exemption. Robust standard errors are in parentheses. \* significant at 10%, \*\* significant at 5%, \*\*\* significant at 1%.



Table 9: Effect of Exemption on Graph Reading (GDP Per Capita)

	(1)	(2)	(3)	(4)	(5)	(6)
	GDP gap	GDP gap	GDP gap	Deviation	Deviation	Deviation
Exemption	-712.084 (1088.079)	-876.285 (1146.520)	-1126.323 (1202.963)	799.783 (1371.746)	1011.386 (1375.892)	628.583 (1464.607)
Constant	-28433.923*** (760.942)			6140.187*** (959.323)		
Mean of Control	-28433.923	-28433.923	-28433.923	6140.187	6140.187	6140.187
Class FE	No	Yes	Yes	No	Yes	Yes
Control Variables	No	No	Yes	No	No	Yes
Number of Observations	229	229	228	229	229	228
R squared	0.002	0.061	0.161	0.001	0.149	0.216

Note: This table presents the placebo effect of receiving an exemption on the accuracy of reading the 2016 Sino-Japanese income gap. As can be seen, the religious intervention has no meaningful impacts on reading the income gap. As shown in columns 4-6, using the “absolute deviation from true value” as outcome variable produces similar results. Robust standard errors are in parentheses. \* significant at 10%, \*\* significant at 5%, \*\*\* significant at 1%.

Table 10: Active Information Distortion

	(1)	(2)	(3)
	Accuracy	Accuracy	Accuracy
Exemp*No Info	-0.0313 (0.0622)	-0.0356 (0.0624)	-0.0367 (0.0632)
No Exemp*Info	-0.1769*** (0.0613)	-0.1837*** (0.0618)	-0.1674*** (0.0622)
Exemp*Info	-0.0617 (0.0606)	-0.0573 (0.0611)	-0.0440 (0.0615)
Constant	0.5547*** (0.0439)		
Mean of Control	0.555	0.555	0.555
Class FE	No	Yes	Yes
Control Variables	No	No	Yes
Number of Observations	533	532	529
R squared	0.018	0.079	0.126

Note: This table compares the accuracy of graph-reading across the four arms. Outcome variable is “accuracy,” which is defined as deviating within 2 points if reading the Hui-Han CEE gap, or deviating within \$1000 when reading the Sino-Japanese income gap. As shown in the table, students are least accurate when asked to read Hui-Han CEE gap without exemptions. Robust standard errors are in parentheses. \* significant at 10%, \*\* significant at 5%, \*\*\* significant at 1%.

Table 11: Fasting Attitudes

	(1)	(2)	(3)
	Agreed Statements	Agreed Statements	Agreed Statements
Exemp*No Info	0.1769* (0.1065)	0.1924* (0.1085)	0.2168* (0.1107)
No Exemp*Info	0.0383 (0.1051)	0.0540 (0.1074)	0.0485 (0.1089)
Exemp*Info	0.2936*** (0.1038)	0.2988*** (0.1063)	0.3216*** (0.1075)
Constant	1.3543*** (0.0754)		
Mean of Control	1.354	1.354	1.354
Class FE	No	Yes	Yes
Control Variables	No	No	Yes
Number of Observations	532	531	528
R squared	0.019	0.053	0.088

Note: This table presents the effects of the information treatment, the religious treatment, and their interaction on the number of statements one agreed with in the list experiment. The results suggest that receiving the exemption alone makes one more willing to delay fast, receiving the information does not have any significant impact, and receiving both the religious and information interventions have the most powerful persuasion effects. Robust standard errors are in parentheses. \* significant at 10%, \*\* significant at 5%, \*\*\* significant at 1%.

# Appendix

## A Setup of the Model

There are two periods, period 0 and period 1. Student  $i$  derives payoff  $v_i$  from fasting in each normal Ramadan period. Denote her vulnerability to hunger and thirsty by  $\rho_i \in \{0, 1\}$ , which she cannot observe directly in period 1. However, she has a prior about this vulnerability which can be fully characterized by  $\hat{\rho} \equiv P\{\rho_i = 1\}$ .<sup>40</sup> Denote her fasting behavior in periods 0 and 1 by  $f_0$  and  $f_1$  respectively.

Period 0 describes students' fasting behavior during a normal Ramadan period, when Ramadan does not overlap with the CEE. In this period, fasting only affects students' performance in CEE via negatively affecting the effectiveness of learning during Ramadan but not their health status during the exam. The quantity of this effect is expressed as  $\kappa h$ , where  $h$  is the full effect had she fasted during the CEE and  $\kappa < 1$  captures the relatively minor impact on CEE due to inefficient learning during previous Ramadan months.  $\omega_i > 0$  represents the importance students  $i$  attach to the final outcome of the college entrance exam. For simplicity, we assume that students know their  $\rho_i$  due to repeated fasting experience in middle school. They choose  $f_0$  to maximize:

$$f_0 v_i + (1 - f_0)(\kappa \omega_i h \rho_i + \epsilon_{i0}) \quad (5)$$

where  $\epsilon_{i0}$  is a random disturbance governed by distribution  $F_0(\epsilon_{i0})$ . Put it in another way, students will either fast ( $f_0 = 1$ ), in which case they derive utility  $v_i$  by committing to religious practice, or not to fast ( $f_0 = 0$ ), in which case they enjoy enhanced learning effectiveness. Note that we arrange the utility in this form to highlight the tradeoff between fasting ( $f_0 = 1$ ) and not fasting ( $f_0 = 0$ ).

In period 1, students have answered the survey we distributed, and were expecting the

---

<sup>40</sup>Here we binarize the impact of fasting to be either “negative” or “nonexistent,” this is without much loss of generality because no more than 3% of the students in any treatments have beliefs that Ramadan will help boost their performance in the CEE.

CEE in a month. They decide to fast or not in the exam, get anticipatory utility about her performance in the exam and derive utility from fasting behavior, denoted by  $f_1$ . In this period, they can no longer remember  $\rho_i$  but instead, they form a posterior about  $\rho_i$  based on prior  $\hat{\rho}$  and previous fasting behavior  $f_0$  as a Bayesian. This is due to either forgetfulness or that they lack knowledge about the impact of fasting on test performance (remember in period 0 that they only experienced fasting when no formal exams like CEE happened). In this period students jointly choose  $(\hat{\rho}, f_1)$  to maximize:

$$f_1 \cdot (v_i r - \omega_i E[\rho_i | \hat{\rho}, f_0] h - C(\rho_0 - \hat{\rho})) + (1 - f_1)(-C(\rho_0 - \hat{\rho}) + \epsilon_{i1}) \quad (6)$$

where  $\epsilon_{i1}$  is governed by distribution  $F_1(\epsilon_{i1})$ . Denote the joint distribution of  $(\epsilon_{i1}, v_i)$  and the marginal distribution of  $v_i$  by  $F(\epsilon_{i1}, v_i)$  and  $G(v_i)$  respectively. Note that  $v_i$  has to be non-negative, which is the only restriction for distribution  $F(\epsilon_{i1}, v_i)$  and  $G(v_i)$ .  $r$  is the special return for this special Ramadan period (i.e. fasting during CEE). For simplicity,  $r \equiv r_C = 1$  if students regard this fasting period the same and the rest;  $r \equiv r_T$  with  $0 < r_T < 1$  if students are persuaded by religious leaders, and believe that fasting may not be necessary during the particular exam days. Therefore  $v_i r$  captures the payoff from fasting during CEE.  $-E[\rho_i | \hat{\rho}, f_0] h$  is the expected cost of fasting during CEE, and  $-C(\rho_0 - \hat{\rho})$  is the cognitive cost of manipulating her prior away from her original prior  $\rho_0$  had motivated beliefs been not at play. We assume that  $C(\cdot)$  is twice continuously differentiable, minimized at 0. We also assume  $\rho_0$  and  $\hat{\rho}$  to be a real number between 0 and 1. Note that we arrange the utility in this form to highlight the utility derived from both fasting ( $f_1 = 1$ ) and not fasting ( $f_1 = 0$ ) respectively.

The major difference between our model and the previous studies is the focus on the manipulable prior  $\hat{\rho}$ , which merits further discussions. Aside from the mechanical explanation above, another interpretation of  $\rho_0$  is that this prior is subconscious, and the subject's cognition process manipulates her prior away from the subconscious one to maximize her anticipated utility. The modeling of  $\hat{\rho}$  is similar in spirit to [Augenblick et al. \(2016\)](#), where

students manipulate their beliefs about the probability of dooms day above their original beliefs had a religious concern not been present. Importantly, this subconscious belief need not be accurate. While Augenblick et al. are agnostic about the formation and implications of differential  $\rho_0$  in their paper as this is not their focus, we directly test the additional implication of a wrong  $\rho_0$  and confirms the validity of our model.

Our model is also different from previous studies on motivated beliefs in that the anticipatory utility merely comes from students' expectation about their own performance in the exam. Arguably, as an once-in-lifetime high-stakes exam, for which students have been preparing for years, the effect of anticipatory utility should be particularly strong. We do not specifically model the utility of religious beliefs, such as utility carried by  $h$  itself, which may reflect people's belief on how omnipotent their religion is. The primary reason of this omission is that the incorporation of this utility does not qualitatively change our results, and our empirical results do not support this possibility either.

This model has a number of predictions about students' response in beliefs and fasting attitudes. We categorize them into three groups to highlight the relationship between these propositions and the results presented in the next section. Specifically, Proposition 1 predicts response in beliefs under unawareness of fasting impact; Proposition 2, 3, 4 predicts response in beliefs under awareness of fasting impact; Proposition 5 discusses the relationship between the beliefs and the perceived importance of the College Entrance Exam; Proposition 6 and 7 presents our model's prediction on fasting attitudes.

**Proposition 1** When  $\rho_0 = 0$ ,  $\hat{\rho} = 0$  irrespective of the value of  $f_0$ ,  $f_1$ ,  $r$  and  $v_i$ .

This proposition discusses how students might react when their subconscious beliefs are wrong. Since anecdotal evidence suggests that students may not be aware of the negative impact of fasting at all, our proposition focus on the prediction in this case. The framework predicts that the students do not have to incur any cost to create illusion, but just happily take the view that fasting does not do even cause the slightest harm. As a result they sincerely do not believe that on average, fasting is significantly detrimental to their cognitive

function regardless of whether religious leader try to persuade them to fast or not during CEE. This prediction of this proposition, in our context, is elaborated by Hypothesis 1 in the main text.

**Proposition 2** In case of  $\rho_0 > 0$  and for almost any given  $(\epsilon_{i1}, f_0)$ ,  $\hat{\rho} < \rho_0$  if  $f_1 = 1$  for any positive  $r$  and  $v_i$ .

As one of the most basic results of this model, this proposition says that for people who choose to fast, they have the incentive to distort their prior as long as they become partially aware of the fact that fasting is harmful to their exam performance, irrespective of its magnitude. In our experiment, we use “belief about the average impact of taking the CEE during Ramadan” as a proxy for the parameter  $\rho_0$ . This prediction of this proposition, in our context, is elaborated by Hypothesis 2 in the main text.

As  $r$  change, students have different incentives to fast, hence to distort their beliefs about the impact of fasting, as illustrated in the following proposition:

**Proposition 3** In case of  $\rho_0 > 0$ , for any given  $(\epsilon_{i1}, f_0)$ ,  $\hat{\rho}$  is weakly decreasing as  $r$  increases: for small  $r$  such that students opt not to fast, their belief  $\hat{\rho} = \rho_0$ . Students do not bias belief downwards until  $r$  is large enough such that  $f_1 = 1$ , and the extent of distortion is constant for  $f_1 = 1$ .

Put it in another way, this proposition says that given the awareness of the negative impact of fasting on exam, students are more likely to form the right belief and not to fast if the religious leader successfully persuade them not to do so by lowering their  $r$ . Moreover, as students face two options for  $f_1$  (to fast or not), their choice regarding the extent of manipulation is also binarized: either they do not manipulate at all and do not fast, or they manipulate to a constant extent and and stick to the religious practice regardless of how valuable/harmful it is. Students’ adjustment on their prior is therefore entirely on the extensive margin. This prediction of this proposition, in our context, is elaborated by Hypothesis 3 and 4 in the main text.

For simplicity, we additionally assume that  $\kappa$  is small in the discussion of last proposition.

This assumption says that the impact of Ramadan fasting during pre-exam period (say fasting one year or two years ahead of the CEE) is minor to fasting on CEE exam. We argue that this is a reasonable assumption for the following two reasons: first, the length of Ramadan fasting is merely one month for every year in Islamic calendar, which is relatively short compared to years of exam preparation; second, even if students' learning activity are affected during fasting, they can still make up for it by studying harder before/after the fasting month.

This proposition concerns the heterogeneity of the treatment effects with respect to past fasting behavior  $f_0$ . While the prediction of model in general may not be entirely clear given different  $\kappa$ ,  $f_0$ ,  $C(\cdot)$  and the joint distribution of  $v_i$  and  $\rho_i$ , with assumption on  $\kappa$ , we can derive the following results.

**Proposition 4** When  $\kappa$  is sufficiently small, the distribution of  $v_i$  given  $f_0 = 1$  stochastically dominates that given  $f_0 = 0$ . Hence given the same  $\rho_0$ ,  $E[\hat{\rho}|f_0 = 1] < E[\hat{\rho}|f_0 = 0]$

This proposition discuss the case where fasting in the past can barely affect the CEE outcome. In this case, students can only extract information about  $v_i$  from  $f_0$ . For those who did not fast in the past, then have lower  $v_i$ , hence less incentive to manipulate their beliefs. We view this assumption as plausible because as we have discussed in institutional details, past fasting rarely affects the exam outcome because students have three years to prepare for the exam, hence they can have plenty time and opportunities to make up had they, by any chance, fallen behind during the fasting period. Moreover, the results are fairly robust even when  $\kappa$  is large <sup>41</sup> This prediction of this proposition, in our context, is elaborated by Hypothesis 5 in the main text.

**Proposition 5** Holding other parameters constant and  $f_1 = 1$ ,  $\hat{\rho}$  is weakly decreasing as  $\omega_i$  increases.

The intuition of this proposition is clear: the motivation of distortion is determined by

---

<sup>41</sup>When  $\kappa$  is large,  $f_0$  is affected by both  $\rho_i$  and  $v_i$ . We need to consider the joint distribution of these two variables. However, even in this case, with moderate assumptions on cognitive cost, we will be able to get the result that the optimal probabilistic beliefs for those who choose  $f_1$  to be 1 is smaller for students who fast in the past.



the value of anticipatory utility. If the individual in question attaches more importance to the exam, she naturally cares more about the value of her anticipatory utility. Hence, given that she decide to fast, the presence of motivated beliefs generates more biases when the stake is even higher, which runs against the argument that economic importance may mitigates distortion in this particular case. This prediction of this proposition, in our context, is elaborated by Hypothesis 6 in the main text.

The last two propositions concerns treatment effects on fasting attitudes.

**Proposition 6** In case of  $\rho_0 > 0$ , for almost any given  $(\epsilon_{i1}, f_0, v_i, r)$ , as long as  $h > 0$ ,  $f_1 = 0$  if and only if  $\hat{\rho} = \rho_0$

This proposition provides us with a tight link between the elicited beliefs  $\hat{\rho}$  and fasting behavior  $f_1$  during CEE: when students are aware of the harm of Ramadan fasting (i.e. their subconscious belief  $\rho_0$  is positive), those who hold the right beliefs will not fast and vice versa. While the implication that we can precisely identify those who do not fast must express the right belief is not robust to alteration such as incorporating people’s utility from the omnipotence of their religion (i.e. utility as a function of  $h$ ), it is indeed robust that given a correct  $\rho_0$ , as beliefs become more accurate, students are less likely to fast during the CEE across different treatment groups. This proposition provides a way to proxy fasting behavior: if we want to focus on the group of people who fast (say, examine the impact of perceived stake on biases conditional on fasting), we can restrict our attention to subsample where people don’t read the graph accurately.

While people will not adjust their beliefs given the initial unawareness of the harm of fasting, the persuasion from religious leaders do decrease  $r$ , which decreases the gap of utility between fasting and not fasting in period 1. If there are any independent disturbance of fasting preferences as illustrated by  $\epsilon_{i1}$  in the model, the rate of fasting will also be decreased by authorization from religious leaders.

The next proposition discusses the effectiveness of information treatments in terms of changing fasting attitudes. We can easily deduce from Equation 6 that religious leader

persuasion alone is sufficient to shift the fasting decisions of some people. In addition to that direct channel, there is also an additional role of information dissemination on changing fasting attitudes:

**Proposition 7** For any given  $\epsilon_{i1}$ , Denote the minimum level of  $v_i$  needed to choose fast for treatments “*No Exemp\*No Info*,” “*Exemp\*No Info*,” “*No Exemp\*Info*,” “*Exemp\*Info*” by  $\bar{v}_1, \bar{v}_2, \bar{v}_3, \bar{v}_4$ , respectively. If, say, any non-negative  $v_i$  is enough for fast in treatment “*No Exemp\*No Info*,” then  $\bar{v}_1 = 0$ . We have: (i)  $\bar{v}_1 < \bar{v}_2, \bar{v}_1 < \bar{v}_3$ ; (ii)  $\bar{v}_4 - \bar{v}_2 > \bar{v}_3 - \bar{v}_1$ .

This proposition use a specific set measures,  $\bar{v}_1, \bar{v}_2, \bar{v}_3, \bar{v}_4$ , to measure people’s preference to choose fasting in the end. The higher the threshold is, to the less extent people would prefer fasting. (i) says that the threshold for merely providing information  $\bar{v}_3$  and threshold for merely providing religious exemption  $\bar{v}_2$  both move up relative to control threshold  $\bar{v}_1$ , indicating that both treatment works in the same direction, whereas the relative effectiveness of them is an empirical question. (ii) says that the information treatment and religious exemption may serve as compliments: when religious exemption is granted, the effectiveness of providing information in terms of the movement of the threshold,  $\bar{v}_4 - \bar{v}_2$ , is larger than  $\bar{v}_3 - \bar{v}_1$ , in which case no exemption is granted. Of course, the results still hold when we regard these threshold as a function of  $\epsilon_{i1}$ , and integrate over it to compare the expected level of thresholds. This prediction of this proposition, in our context, is elaborated by Hypothesis 8 in the main text.

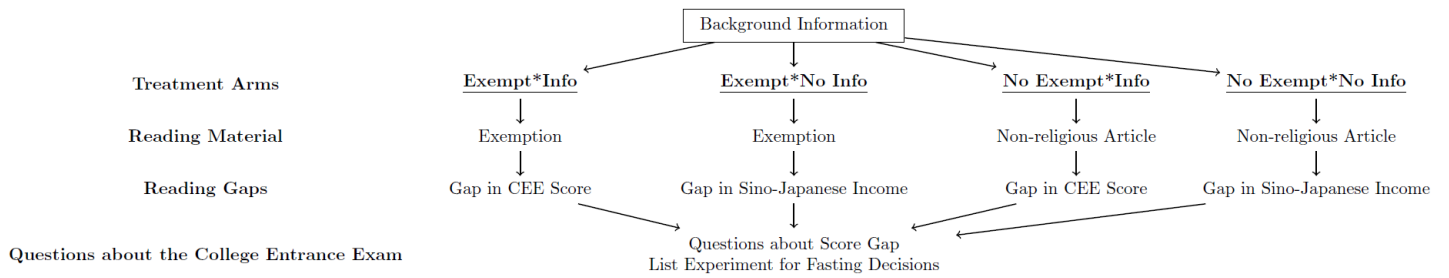
## B Translated Survey Questions and Reading Materials

*Section A: Background Information*

*Section B: Reading Material (treatment and control reading materials randomly assigned to students)*

*Section C: Reading Gaps (treatment and control graphs randomly assigned to students)*

*Section D: Questions about the College Entrance Exam*



## Section A: Background Information

### Name and Student ID

1. **Your gender:**                      A. Male              B. Female
  
2. **Your ethnic group:**              A. Han              B. Hui              C. Other
  
3. **The highest education level among your parents:**
  - A. Primary school or below
  - B. Middle school
  - C. Occupational high school
  - D. Regular high school
  - E. Community college
  - F. Regular college
  - G. Graduate degrees
  
4. **Do you have access to computer and internet at home?**
  - A. Access to neither
  - B. Access to computer but not internet
  - C. Access to internet but not computer
  - D. Access to both
  
5. **Do you board at school?**
  - A. Yes              B. No
  
6. **Which of the following hobbies do you have?**
  - A. Video games on PC
  - B. Video games on smart phone
  - C. Foreign sports matches
  - D. Japanese and Korean TV shows
  - E. American and British TV shows
  - F. Foreign popular music
  - G. None of the above

**7. What is your risk attitude in making high-stakes life decisions?**

Please evaluate on a scale of 1 to 5: 1=very cautious, 2=relatively cautious, 3=neutral, 4=relatively adventurous, 5=very adventurous)

**8. Do you think higher education can lead to a better life?**

Please evaluate on a scale of 1 to 5: 1=completely disagree, 2=generally disagree, 3=neutral, 4=generally agree, 5= completely agree)

**9. Do you pray everyday?**

A. Yes      B. No      C. Not applicable because I am not Muslim

**10. Did you ever break a fast during Ramadan in the past three years?**

A. Yes      B. No      C. Not applicable because I am not Muslim

## Section B: Reading Material

*(treatment and control reading materials randomly assigned to students)*

Please read the following article and answer three reading comprehension questions. (For each correct answer, you will receive 2 RMB in rewards.)

*(Treatment reading material)*

Between 2016 and 2018, the Muslim holy month of Ramadan coincided with the college entrance examination. Therefore, for many Muslim students, "whether they can break the fast and make it up later after the college entrance exam" has become an important issue that cannot be ignored.

In order to understand whether "Ramadan fasting can be postponed during the college entrance examination," we consulted Guo Haihui, a well-known scholar who graduated from the Royal Religious University of Malaysia and the current Imam of the century-old temple "Xiangfang Mosque." He said:

"The acts of worship of Islam has three goals: to express faith to Allah, exercise good words and deeds and sublimate souls. The Prophet (PBUH) said: 'Allah does not look at your appearance and your goods. He looks only at your heart and your deeds.' The good intention for any deed is the key to get good results. The college entrance examination has become a major concern for the whole society, let alone for the students. It is no exaggeration to describe it as the turning point for the students. Because the examination is both mentally and physically exhausting and no easier than any other work, both parents and students need to make great efforts to prepare for it. Therefore, it is necessary to appropriately reduce their burden. To temporarily postpone the fasting during the college entrance examination will neither anger Allah, nor will it weaken your beliefs."

We also consulted the famous scholar Liu Xueqiang, who is also the vice president of the Provincial Islamic Association and the Imam of the famous Xigong Mosque. His suggestion was consistent with that of Guo Haihui:

"The purpose of Islamic law is to create convenience for people, not to create difficulties. The implementation of Islamic law can be flexible in the actual process and it should not be interpreted rigidly. Allah never asks people to do things beyond their ability. Therefore, if the candidate thinks that fasting will affect his or her test scores, it is acceptable to break the fast, and make up afterwards. It poses no problem in the Islamic law."

This situation is not unique to China: as the college entrance examination is held in June in many countries, the jurists in these countries also give corresponding doctrinal orders for the examination and fasting. Through summarizing, we find that many authoritative religious scholars and institutions

abroad share similar views on this issue with imams in China. For example, when being asked if ``students can break the fast during the college entrance examination," Grand Mufti Shawki Allam of the Egyptian Shariah Committee replied:

``If fasting affects the students' ability to revise and study for the exam, resulting in symptoms like reduced concentration, unresponsiveness, dizziness, etc., and the exam time stipulated by the education system cannot be adjusted to the end of Ramadan, students should break the fast and make it up after the exam, so that their previous efforts will not be wasted."`

Experts of the French Muslim Religious Committee also conducted in-depth researches on this issue and finally issued a notice: ``It is recommended that candidates break the fast, especially those who need to take the exam in the afternoon. However, they need to make it up after Ramadan."`

**11. According to Mr. Guo Haihui, one is allowed to delay the fast for the CEE, because Allah cares the most about:**

- A. Your appearance and your goods
- B. Your heart and your deeds
- C. Both A and B are correct
- D. Both A and B are incorrect

**12. What is the opinion of Mr. Liu Xueqiang on Ramadan fasting:**

- A. The implementation of Islamic law can be flexible, and students should be allowed to delay their fast for the CEE
- B. Ramadan fasting is an outdated tradition that does not fit modern societies
- C. Both A and B are correct
- D. Both A and B are incorrect

**13. According to Mr. Shawki Allam, what are the conditions that warrant an exemption to delay the fast for an exam:**

- A. Ramadan fasting would hurt exam performance
- B. The exam cannot be rescheduled
- C. Both A and B are needed to delay the fast
- D. Neither A nor B is needed to delay the fast

**Please read the following article and answer three reading comprehension questions. (For each correct answer, you will receive 2 RMB in rewards.)**

**(Control reading material) :**

There is a US diplomat who spent ten years in Moscow in the 1920s and 1930s. He wrote in his memoir that he has watched the ``Swan Lake" performance for 300 times. Even for a classic ballet as famous as the ``Swan Lake," 300 times is too much. But for a diplomat, some social engagements are inevitable, and he had no choice but to watch this play again and again until it was a bit overwhelming.

I guess, for the first few dozen times to watch the “Swan Lake” performance, what the American heard was the beautiful music of Tchaikovsky and what he saw was the beautiful performance of the artists of the former Soviet Union. He appreciated it wholeheartedly and applauded ardently from time to time. After having watched it for 100 times, the impression became different. At that time, he could only hear some instruments ringing and see some people running on the stage and he became slow-witted as well. Then, after 200 times, the impression changed again. The music was on and the curtain was up, but there was only the white void in front of him - he was caught in the nightmare of this play. At this point, his eyes were blank, his face was smirking, like a hibernating crocodile whose loose muscles could not support the chin, or a landing boat rushing to the beach, and his mouth was opening, with big drops rolling down from the corner of his mouth and falling on his knees. It was so intoxicating that not until the curtain was down and someone switched off the light did he realize that it was over. He quickly slapped himself awake and went home. Later, when he got the order to leave the Soviet Union, he said with relief: well, finally, no more “Swan Lake.”

As you know, the scene above is just my guess - to be honest, no one will ever include this in one's memoirs - but I think anyone repeatedly appreciating a piece of work will encounter these three phases. In the first phase, you hear the music and see the dance - in short, you are enjoying art. In the second phase, you hear some sounds and see some objects moving, and you are aware of a familiar physical process. In the third phase, you have gained a philosophical perspective and finally realized that the ballet, just like everything else in the world, is a form of material existence. From art to science and then to philosophy, it is a process of returning to the original nature.

Normally, people's appreciation always stays in the first phase, but some people can reach the second phase. For example, in the movie “Farewell My Concubine,” the tyrant played by Ge You blamed an actor: The Conqueror played by other people took six steps, why did you take four steps? In the lab, a physicist would also ask an object in confusion: how can your acceleration be two Gs while others is a G when falling in a vacuum? In the laboratory, a physical process must be reproducible, or otherwise it will not be scientific.

Therefore, no object falls with two Gs' acceleration. The classic works of art should also be reproducible. Take “Swan Lake” for example, the content of this ballet cannot be changed in order to



let future generations appreciate the best things created by the predecessors. It can only be played over and over again.

Classic works are good and worth watching, but not too many times. Otherwise, the art cannot be appreciated - just like tea drinking in the “Dream of Red Mansions”: one cup is for tasting, two cups are for the thirst, and three cups are drinking like a fish. Of course, whether it is tea-tasting or drinking like a fish, it is just a way of material existence. In this respect, there is no difference between them...

**11. According to the author, what are the three phases in the repeated appreciation of art?**

- A. Science-Philosophy-Art
- B. Philosophy-Art-Science
- C. Art-Science-Philosophy
- D. Art-Philosophy-Science

**12. What is the author’s opinion regarding the “reproducibility” of art:**

- A. Physics should be reproducible, art should not be reproducible
- B. Physics should not be reproducible, art should be reproducible
- C. Both should be reproducible
- D. Neither should be reproducible

**13. What is the author’s opinion regarding the appreciation of art:**

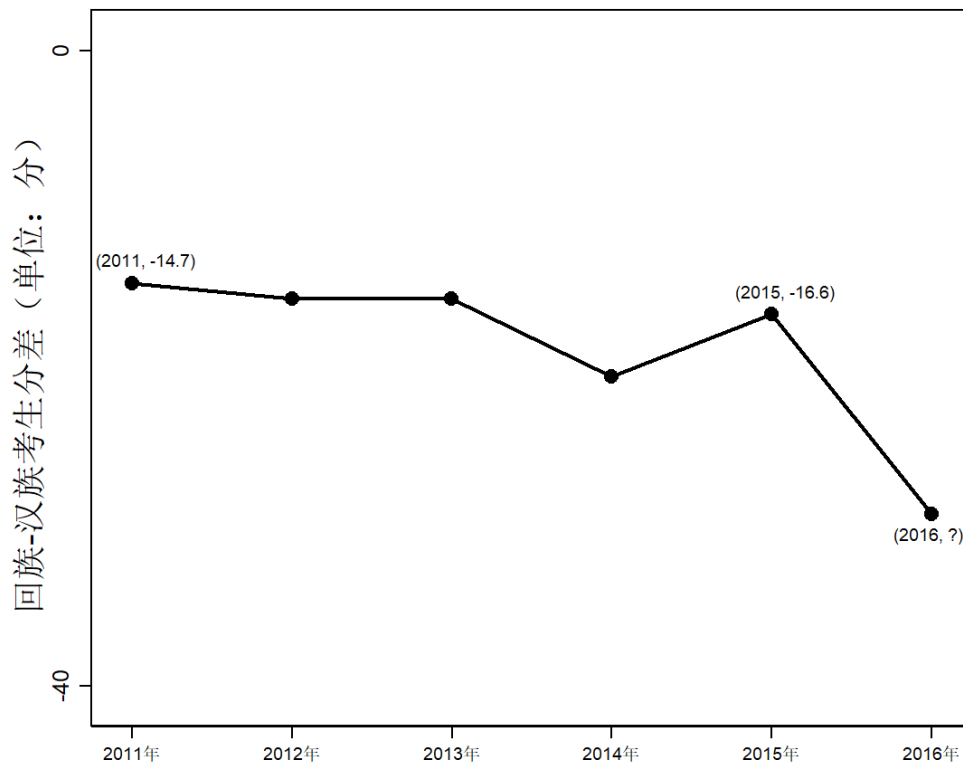
- A. One should appreciate the same work repeatedly
- B. One should not appreciate the same work repeatedly
- C. Both statements above are wrong
- D. No clear opinion expressed by the author

## Section C: Reading Gaps

*(treatment and control groups randomly assigned to students)*

### Hui-Han gap figure:

Based on the administrative information provided by the Ningxia Provincial Bureau of Examination, we plot the gap in the College Entrance Exam (CEE) score between Hui (Muslim) and Han (non-Muslim) students in Ningxia from 2011 to 2016. The trend of this Hui-Han gap is shown in the figure below.



*(Note: The y-axis label is “College Entrance Exam score gap between Muslim (Hui) and non-Muslim (Han) students (unit: point)”)*

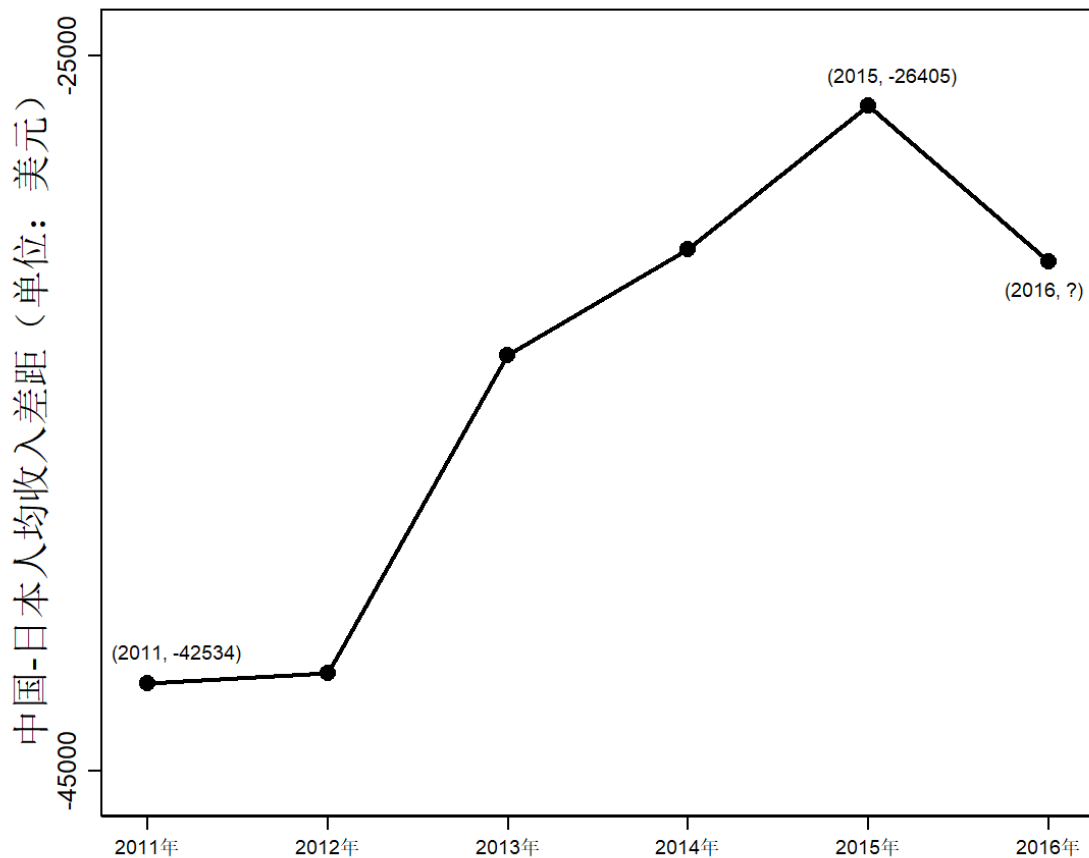
In 2011, the average CEE score of Hui students was 366.9, the average score of Han students was 381.6, so the average Hui-Han gap was -14.7 points. In 2015, this gap was -16.6 points.

**14. In 2016, the CEE happens during Ramadan. Please read from this figure: what was the CEE score gap between Muslim and non-Muslim students in 2016?** (If the accuracy of your answer is above the median in your class, you will receive a cash reward of 3 RMB.)

Answer: \_\_\_\_\_ points

### Sino-Japanese gap figure:

Based on data published by the World Bank, we plot the gap in average annual income between China and Japan from 2011 to 2016. The trend of this Sino-Japanese gap is shown in the figure below.



*(Note: The y-axis label is "Per-capita income gap between China and Japan (unit: U.S. dollar)")*

In 2011, the average annual income was 5634 USD in China, while 48168 USD in Japan, so the average Sino-Japanese gap was -42534 USD. In 2015, this gap was -26405 USD.

**14. Please read from this figure: what was the annual income gap between China and Japan in 2016?** (If the accuracy of your answer is above the median in your class, you will receive a cash reward of 3 RMB.)

Answer: \_\_\_\_\_ USD

## Section D: Questions on the CEE

15. Your total score in the “second mock exam”: \_\_\_\_\_

16. Among the five statements listed below, how many do you agree with?

*In this question, you do not need to specify which exact statements you agree with, you just need to tell us the number of statements that you agree with (0-5).*

- (1) Learning alone is more effective than learning in groups.
- (2) We should care about what we have actually learned more than the CEE score itself.
- (3) Delaying Ramadan fast until after the CEE is acceptable.
- (4) Playing sports is good for exam preparation.
- (5) The CEE mainly tests on one’s familiarity with the material rather than actual intelligence.